

DESIGN BY BRANDON PALMA / 8THDAYCREATE.COM 2019



ROLEN STONE HEMP CO.

Rolen Stone Farms has cultivated cannabis in the rich soils of the Applegate Valley since 2016.





Rolen Stone Farms and Extracts is dedicated to organic growing practices, using living soil and nutrients locally sourced from the Oregon Coast. The farm is dedicated to carefully selecting the best phenotypes for flavor and potency. Rolen Stone uses the finest extraction equipment and methods to create extracts that truly reflect the cultivar's unique terpene profile.



HEMP CBD CONNEX

Brought to you by the Cannabis Collaborative Conference

JANUARY 29 & 30, 2020 • PORTLAND EXPO CENTER

In this 6th year of the conference, we explore the expansion of the industry highlighting the vast potential of **HEMP** and **CBD** products while staying true to our roots supporting the recreational cannabis industry.

**FARMERS, PROCESSORS
& BUYERS CONNECT**

**THE LATEST IN REGIONAL
& FEDERAL REGULATIONS**



**NEW THIS YEAR:
CBD MARKETPLACE**

For exhibitor and sponsor info email:
marylou@ccc-con.com
connexhempevents.com

THANK YOU TO OUR SPONSORS



River Valley



Remedies

NOW OPEN!

Monday- Saturday 9am-10pm
Sunday 10am-8pm

\$2 PRE-ROLLS

\$3 GRAMS OF FLOWER

\$10 GRAMS OF SHATTER

DEALS EVERYDAY!

1487 BROADWAY ST NE SALEM, OR 97301

Sugar Top Buddery

TOKES 'N' TREATS



THE MOET

WITH
SOUL VIBRATOR AND
STUDIO 541 SHOWCASE

LIVE AT THE
MCDONALD
THEATRE
EUGENE, OR
10.31.19

TOKES 'N' TREATS ROUTE

Collect Stops, Get Free Stuff

Z

POWERED BY
ZAVE



HigherPromos
The Swag Specialists

The Greener Side



next+level
WELLNESS



MOOD
Fine Cannabis

STUDIO 541
productions



heHerbalConnection



Do not operate a vehicle or machinery under the influence of this drug. For use by adults 21 years of age and older. Keep out of the reach of children.

Natural Tastes Better



Our natural, full-spectrum Cannabis extracts are strain specific and include each strain's original terpenes and cannabinoids to give you the true rich flavor of cannabis.

FIND OUT MORE AT [AVITASGROWN.COM](https://avitasgrown.com)

AVITAS

THIS PRODUCT HAS INTOXICATING EFFECTS AND MAY BE HABIT FORMING. MARIJUANA CAN IMPAIR CONCENTRATION, COORDINATION, AND JUDGMENT. DO NOT OPERATE A VEHICLE OR MACHINERY UNDER THE INFLUENCE OF THIS DRUG. THERE MAY BE HEALTH RISKS ASSOCIATED WITH CONSUMPTION OF THIS PRODUCT. FOR USE ONLY BY ADULTS TWENTY-ONE YEARS OF AGE AND OLDER. KEEP OUT OF THE REACH OF CHILDREN.

CONTENTS



THE HEMP ISSUE

Sweetbrier Farms Co-owners Justin Fakler, Randy Kottke and Ryan Beyerlein oversee 134,000 hemp plants at their garden in Applegate, Southern Oregon.

12 NATIONAL NEWS
14 LOCAL NEWS
16 OLCC OPINION
20 HIGHLY LIKELY

22 PATIENT PROFILE
26 STONER OWNER
30 BUDTENDER Q&A
34 LUMI WELLNESS SHOP

36 STRICTLY CBD
44 SWEETBRIER FARMS
46 ZOE THERAPEUTICS
50 CBD PRODUCT GUIDE

60 NAVIGATING CBD
64 CANNABIS RECIPES
66 HEMP TINCTURE
68 HEMP SHATTER

70 HEMP TOPICAL
72 TANNINS & TERPENES
76 ON THE ROAD DENVER
78 STONEY BALONEY



CULTIVATING EXPERIENCES THAT
ELEVATE EVERYTHING YOU DO

Flower
Edibles
Pre-Rolls
Cartridges
Extracts



@HIGHLANDPROVISIONS | HIGHLANDPROVISIONSCO.COM

Do not operate a vehicle or machinery under the influence of this drug. For adults 21 years of age and older. Keep out of reach of children.

CONTENTS



NESTLED IN ONE OF OREGON'S MOST RENOWNED AGRICULTURAL REGIONS, THE ILLINOIS VALLEY, ZOË THERAPEUTICS' EXPANSIVE PROPERTY LIES ABOUT 20 MILES FROM DOWNTOWN GRANTS PASS.

FARM SPOTLIGHT

46

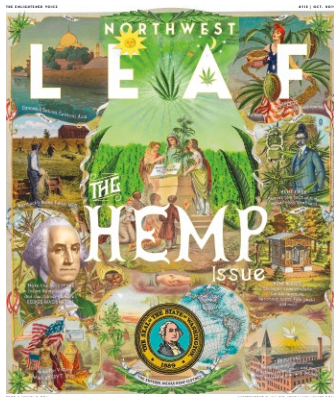
General Farm Manager Michael Beeler

ESTABLISHED 2010

LEAFTM

NATION

THE ENLIGHTENED VOICE



ON THE COVER

>> THE HEMP ISSUE

Hemp in this country has a storied history. Since the beginning of the United States, hemp has played an important role as a textile, food source and more. Explore the issue to learn more about this great plant.

ART BY BRANDON PALMA
@8THDAYCREATE

CONTRIBUTORS

Tom Bowers *Features*
Joshua K. Elliott *Photography*
Steve Elliott *National News*
Will Ferguson *Reviews*
Simone Fischer *Profiles*
Matthew Meyers *Opinion*
Meghan Ridley *Editing*
Chris Ryan *Photography*
Pacer Stacktrain *Features*
Laurie & Bruce Wolf *Recipes*

PUBLISHER

WES ABNEY | **FOUNDER & EDITOR-IN-CHIEF**
wes@nwleaf.com | 206-235-6721

CREATIVE DIRECTOR

DANIEL BERMAN | **PHOTOGRAPHY & DESIGN**
daniel@bermanphotos.com

STATE DIRECTOR

MAX EARLY | **PRODUCTION**
max@orleaf.com | 303-746-9067

ADVERTISING

NATE WILLIAMS & MAKANI NELSON
nate@orleaf.com | 415-717-6985
makani@orleaf.com | 808-754-4182

We do not sell stories or coverage. We are happy to offer design services and guidance on promoting your company's recreational, commercial or industrial Cannabis product or upcoming event. We are targeted and independent Cannabis journalism. Email or call to discuss advertising.

WES ABNEY

EDITOR'S NOTE

Thanks for picking up The Oregon Leaf Hemp Issue!

Hemp is going to save the planet - that's no exaggeration. It is a wonder plant that can provide everything from food to fiber to fuel, medicine to building materials, and so much more.

Everything a petrochemical touches in our society for convenience items, we could be making with a renewable resource and healing the earth, instead of poisoning it with carbon emissions and more waste.

The Pacific Northwest has been the epicenter for a rapidly expanding hemp industry that is changing the face of this industrial plant.

When we first began covering hemp farms in 2016, there were about 30 across the region. Last year that number was in the hundreds, and this year there are easily thousands of different hemp farms across the country, ranging from backyard producers to massive agricultural setups. Much like the Cannabis boom, hemp is spreading across the country and the impact is being felt worldwide.

We are at a turning point as a society and a species as we realize that we cannot continue to live in destructive patterns for our planet, or people.

Hemp and CBD wellness are big drivers of this, and as we bring healing to our planet, I feel honored to play a part in spreading awareness of the plant and the people doing amazing things with it.

Check out our stories inside this issue for new ways to use hemp, and even live in it! Thank you for reading and enjoy this new issue of the Leaf!

-Wes Abney

**WE ARE AT
A TURNING
POINT AS A
SOCIETY AND A
SPECIES AS WE
REALIZE THAT
WE CANNOT
CONTINUE
TO LIVE IN
DESTRUCTIVE
PATTERNS FOR
OUR PLANET, OR
PEOPLE.**

11

OREGONLEAF.COM

OREGON LEAF / NORTHWEST LEAF / ALASKA LEAF / MARYLAND LEAF

CONNECT WITH THE LEAF

f @OREGONLEAF | i @OREGONLEAF | t @NWLEAF | c ISSUU.COM/NWLEAF
FREE ONLINE ARCHIVE

OCT. 2019



LEGALIZATION

WISCONSIN DEMOCRATS TAKE ANOTHER TRY AT LEGALIZING CANNABIS

Almost the entire upper Midwest has either legalized weed or at least medical marijuana, but Wisconsin sticks out like a sore thumb. The state will be an “island of prohibition very soon,” said Rep. Melissa Sargent (D-Madison).

Rep. Sargent is trying to change that by writing four bills which would legalize Cannabis for medical and recreational purposes, reports Madison.com.

“Prohibition hasn’t worked for farmers who are unable to tap into a multi-billion dollar industry, nor for those sitting in prison for nonviolent pot-related charges,” Sargent said.

“Plain and simple, I think the most dangerous thing about Cannabis in Wisconsin is that it is illegal,” Rep. Sargent said.

BUSINESS

WHY THE EVERGREEN STATE HAS BEEN PLAGUED BY WEED THEFTS



An expensive series of Cannabis thefts have been occurring in Washington State, and growers aren’t just unhappy with the thieves themselves - they are also pointing fingers at the Washington Liquor and Cannabis Board (LCB).

The agency is tasked with overseeing the state’s recreational Cannabis program, and some growers who’ve lost their market-ready crops to thieves say the LCB has been far too free in sharing insider information about the growers.

Washington has strict reporting requirements for Cannabis industry participants, with an emphasis on growers. Growers, however, understandably want (and, due to ripoffs, actually need) to keep a low profile. When it becomes public knowledge that you are growing hundreds of marijuana plants worth thousands of dollars, bad things can and do happen.

But the LCB requires grow sites to submit their addresses, along with extensive other data. Growers are required to provide much more information to the state than other businesses, including exactly how many plants they grow and harvest and how much inventory is on hand.

It doesn’t take a rocket scientist to view such data from a ripoff point of view. After all, if you can determine a particular grow site - with an address - has a crop ready for harvest, that is information upon which thieves are certainly happy to act.

That’s probably a big reason why licensed Cannabis growers, especially smaller craft growers, are being hit so often. And unfortunately, crop thefts don’t seem to be a particularly high priority among law enforcement. While many growers are filing police reports, The Stranger reports that “no arrests have been made in any of the cases.”

WEST COAST

CANNABIS 2.0: WASHINGTON STATE CONSIDERS OVERHAUL OF CANNABIS INDUSTRY RULES

Seven years after Washington state voters legalized recreational Cannabis, and five years after the state launched its retail market, officials are looking at overhauling rules for the industry. Plans call for boosting minority ownership of marijuana businesses, allowing home deliveries, and letting the smallest growers increase the size of their operations, reports Q13 FOX.

Rick Garza, director of the Washington Liquor and Cannabis Board, along with members of the LCB, are calling it “Cannabis 2.0.”

According to Garza, the agency has “been so challenged with the issues of the day, we haven’t been looking out long-term to determine what the future looks like.”

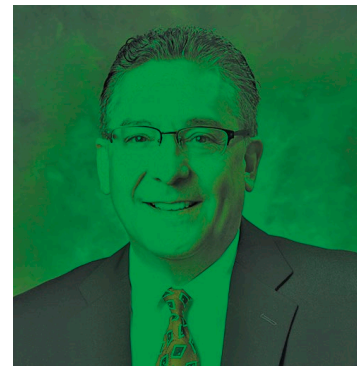
The board is considering abandoning the state’s unwieldy seed-to-sale Cannabis tracking program, which has repeatedly succumbed to software issues, sometimes causing retail operations thousands of dollars. Under a proposed new system, businesses would report their transactions to the LCB and then be audited.

Another proposal examines whether to allow Cannabis to be exported out of state, as Oregon lawmakers did this year, in the event the federal government approves it.

The board has proposed two new bills for the next session of the Washington Legislature in January 2020. The first would create a social equity program to encourage greater ownership of Cannabis businesses by minorities, women, and military veterans.

Washington currently isn’t issuing any more Cannabis retail licenses, but 11 of the 500+ retail license holders have surrendered their licenses, according to Garza. Under the LCB proposal, these could be reissued to minority participants, or new licenses could be granted if cities or counties agree to increase the number of pot shops they’ll allow. Businesses would be eligible if they are owned by a woman, minority or veteran, or if a majority of its ownership group are a protected class under Washington state anti-discrimination laws.

Another proposal would allow Tier 1 producers, currently limited to 2,000 square feet, to sell medicinal Cannabis directly to the state’s 36,000 registered medical marijuana patients. Patients often have a difficult time finding Cannabis free of pesticides and heavy metals in retail stores. Tier 1 growers could sell to patients onsite under the proposal, with other growers at farmers market style locations, or by delivery, according to Garza. Tier 1 growers could also expand to 5,000 square feet under the proposal, then possibly to 8,000 square feet. Many of the smallest growers are struggling because of their legally limited size.



The board is considering abandoning the state’s unwieldy seed-to-sale Cannabis tracking program, which has repeatedly succumbed to software issues, sometimes causing retail operations thousands of dollars.

EAST COAST

MARYLAND CULTIVATORS DRAMATICALLY ADDING CANNABIS PRODUCTION CAPACITY

Maryland’s medical marijuana industry is dramatically expanding, with cultivators across the state adding major capacity to meet the demands of patients flooding the market, and to potentially supply a recreational Cannabis market in the future.

Industry analysts had estimated Maryland’s marijuana market would gross \$60 million in sales by its third year. But by the end of 2017, their very first year, gross sales surpassed \$96 million. And that’s before edible products had even been allowed by lawmakers (now they are).

Three new growers are entering the market alongside 15 businesses that got the initial cultivation licenses three years ago. Regulators are expected to approve another four growing licenses, bringing the total to 22 growers in the state.

Maryland’s successful and stable medical marijuana industry could buttress arguments that the state is ready to embrace recreational legalization, according to some observers. Brian Lopez, chairman of the Maryland Medical Cannabis Commission, said he believes growers are adding capacity in anticipation of “adult use coming.” Regulators note there’s still plenty of room for growth in Maryland’s medical Cannabis market, with 82 dispensaries opening across the state in less than two years.

ALCHEMY AT ITS FINEST.... COMING SOON!

WEED NOT GREED



HEMP INFUSED TRUFFLES, BODY BUTTERS, BATH BALMS AND SIMPLE SYRUPS

Feels Products
Hemp infused, vegan, cruelty free,
natural bath and body care products.

~100mg CBD Bath Bombs~

~Recover~ Unwind~ Indulge~ Stimulate~ Purify~ Detox~
Recharge~ Soothe~ Clarify~

Feels

Don't miss out! Feel the Feels!
www.feelsproducts.com

Like us on Facebook
& Instagram: /feelsproducts/

Order online!
Ships direct
within
United States

Two boxes of Feels bath bombs are shown. The top box is blue and white, and the bottom box is green and white. Both boxes feature the Feels logo.

ELEVATE YOUR SENSES

A woman with dark skin and red lipstick is shown in profile, holding a lit cigarette. She is wearing a large, ornate necklace with red gemstones.

www.th3farms.com

WARNINGS: For use only by adults 21 and older. Keep out of reach of children.
Do not drive a motor vehicle while under the influence of marijuana.

CONSUMER SAFETY

VAPE-INDUCED INJURY SUSPECTED IN OREGON DEATHS



The Oregon Liquor Control Commission has now asked retailers to post a warning provided by the Centers for Disease Control and Prevention. It advises against vape use until the investigation is complete.

As news sweeps the nation of vape-related hospitalizations, the latest report from the U.S. Centers for Disease Control and Prevention counts 12 deaths and over 800 cases (spanning 46 states).

Two confirmed Oregon deaths are drawing local attention and dispensary-bought cartridges are suspected to be the cause. The product names have not been released yet, and Oregon officials are still investigating purchases through at least two unidentified dispensaries.

The primary physicians involved in one of the Oregon cases gave their first interview to Oregon Live. They explained that "like many victims nationwide, the patient had no infections, vaped in the three months before falling ill, and had nausea, severe trouble breathing, and abdominal pain."

The Oregon Liquor Control Commission has now asked retailers to post a warning provided by the Centers for Disease Control and Prevention.

It advises against vape use until the investigation is complete.

News across the country has brought little concrete evidence, but many reports list vitamin E acetate as the suspected ingredient.

In a September 5th press release, The New York State Department of Health announced lab results where "at least one vitamin E acetate containing vape product has been linked to each patient who submitted a product for testing."

NBC News confirmed these findings and shed new light on the topic when they ran tests on 18 different brands of cartridges obtained from legal and illegal sources.

The CannaSafe testing company found Vitamin E in 13 out of 15 black market samples and in another trial, found 10 out of 10 tested for myclobutanil, "a fungicide that can transform into hydrogen cyanide when burned."

COMMERCE

FEARS OF CANNABIS-CONTAMINATED GRAPES LEADS TO LAWSUIT BY MCMINNVILLE VINEYARD

Farms continue to permeate the Oregon agricultural landscape, and in increasing numbers, the legal landscape as well. Now an Oregon-based vineyard is suing a Cannabis grow on racketeering charges, after a federal judge approved proceedings.

An August ruling by U.S. Senior District Judge Anna Brown allowed Momtazi Vineyard in McMinnville to move forward with a lawsuit against Mary, Steven and Richard Wagner, the owners of a neighboring Cannabis operation.

In an AP News report, the defendants claimed that there were no commercial ongoing and that the grow was "for personal medical purpose."

An early September report in the Statesman Journal revealed that the judge ruled "the vineyard has plausibly claimed under the (RICO) act that it has suffered a 'concrete financial loss' because a customer canceled an order over fears the grapes were contaminated with the smell of marijuana."

According to The Associated Press, Oregon has seen around "half-a-dozen similar lawsuits" involving racketeering disputes, but most have failed at the federal level.

This particular case involves grapes in a "federally designated viticulture area," and the scale of the alleged six-ton loss may have played a part in catching the judge's attention.

A U.S. District judge ruled the vineyard has suffered a 'concrete financial loss' because a customer canceled an order over fears the grapes were contaminated with the smell of marijuana.



*Momtazi Vineyard
Owner Moe Momtazi*



CULTIVATION

CROSS-POLLINATION CAUSES NEIGHBORLY QUARRELS

Hemp has seen enormous growth since the 2018 Farm Bill took effect. In a July OPB interview, Jerry Norton, co-founder of the Oregon Industrial Hemp Farmers' Association, said they saw over 50,000 acres of hemp pop up in Oregon this year. The explosion of growth has raised the number of members to over 1,500 individuals, but it has also been raising issues among neighboring farms.

Female hemp plants are generally used for oil extraction and currently take up most Oregon fields, but lately, male plants have been cropping up where they're not welcome.

A lack of state certification programs leaves buyers at the mercy of seed companies.

Courtney Moran, attorney and president of the Oregon Hemp Farmers' Association told Capital Press, "In some cases, people who aren't actually hemp breeders have misrepresented their seeds as feminized."

This situation can become a problem when male plants sprout unexpectedly and begin to pollinate females used for production, and the financial impact can be detrimental to neighboring farms.

This summer, Oregon State University opened the Global Hemp Innovation Center, the nation's largest hemp research effort.

They're looking to tackle these types of issues with a certification program for seeds. In his OPB interview, Norton appeared optimistic about the research.

"Now that they can actually come out to the farm legally, it makes a world of difference."

It can become a problem when male plants sprout unexpectedly and begin to pollinate females used for production, and the financial impact can be detrimental to neighboring farms.

Keep it natural...



NATURAL
ROOTS
Extracts

Vape cartridges with 100% cannabis terpenes
for the most complete effect and flavor.

**ASK FOR NATURAL ROOTS IN
A DISPENSARY NEAR YOU!**

@naturalrootsor

ELEVATE YOUR SENSES




Th³ FARMS
GEMSTONE COLLECTION
VINTAGE OREGON
EMERALD
1 COUNT
CANNABIS **0.5g** PRE-ROLL
**ALL FLOWER
NO TRIM**
GREAT FOR:
FOCUSED ★★★★★
RELAXED ★★★★★
TRANQUIL ★★★★★
WELL BEING ★★★★★
0.5g/0.01g of USABLE MARIJUANA
NET WEIGHT 0.82g/0.02oz


EMERALD

!   
#Th3FARMS
www.th3farms.com

[WARNINGS: For use only by adults 21 and older. Keep out of reach of children.
Do not drive a motor vehicle while under the influence of marijuana.]



TREEHOUSE
COLLECTIVE



**EASTWOOD
RETURNS**
OCTOBER 2019



NEW OLCC HEMP THC LIMIT IS ONCE AGAIN BAD NEWS FOR PATIENTS

STARTING JANUARY 1ST, 2020 THERE WILL BE A 10MG THC LIMIT PER CONTAINER AND 1MG PER SERVING FOR ALL HEMP PRODUCTS, ACCORDING TO THE OREGON LIQUOR CONTROL COMMISSION CERTIFICATION (I.E. SOLD IN OLCC DISPENSARIES).

"Our rules set limits on the total amount of THC that can be present in a "container" – basically a packaged unit of sale ready to be sold to a consumer. Except for usable hemp (flower and pre-rolls), hemp items packaged for sale to consumers can have no more than 10 mg total THC per container.

If the product has servings, it can have no more than 1 mg total THC per serving. Products that exceed these limits cannot be transferred to OLCC licensees and cannot be sold to consumers by OLCC retailers. See OAR 845-025-2760 for details. These limits only apply to hemp in the OLCC-regulated marijuana

market. They do not apply to hemp in the general market."

We've all made fun of gas station CBD, but it seems that with this new ruling that patients might be able to get a more effective full spectrum product from a gas station or grocery store than a licensed Cannabis dispensary. This is a move by the OLCC to force some of the less psychoactive products to be taxed, such as 20:1 and 30:1

Matthew Meyers is a longtime Cannabis community member and Oregon Leaf contributor, hailing from Hood River.

ratio high CBD, low THC products - which are almost always used with medicinal intentions.

It's important to remember that hemp is already limited to 0.37% THC weight by the FDA. For some reason the OLCC thinks they are a better judge of what type, potency, and serving size medicinal patients and consumers should be allowed to buy. Last month I wrote about the importance of using full spectrum products, especially when using



"It seems that with this new ruling that patients might be able to get a more effective full spectrum product from a gas station or grocery store than a licensed Cannabis dispensary."

them medicinally. However, this new limit will force producers to move away from full spectrum products in favor of isolated CBD that will meet the newly imposed THC limits.

Considering there is already a strict limit on THC percentage allowed in hemp products, this recent move by the OLCC isn't intended to improve public safety - it's all about the tax money. Hemp products are not currently subject to the 20% state Cannabis tax in Oregon.

By placing a stricter THC limit, the OLCC is hoping many of these 20:1 and 30:1 products that patients love and rely on will have to switch from hemp to a Cannabis classification, making them taxable and thus drastically increasing tax revenues for the state.

But by making this greedy move, patients must once again pay the price, losing tax-free full spectrum products that have consistently worked for them. The new strict 10mg limit will mean producers must use isolated CBD powder instead of being able to extract the full spectrum ratio that's naturally occurring in hemp.

A 10mg per bottle limit also makes it harder for patients to stock up on the medicine they need, making it a set milligram instead of a percentage or a ratio like the FDA does (0.37% THC per weight). The OLCC's new rule makes it so there will be more packaging and less medicine in each package, adding to the already overwhelming problem of packaging waste that has long plagued our industry.

I hope the decision makers at the OLCC will reconsider this rule for the sake of patients who rely on buying their potent, unaltered, full spectrum hemp medicine from a licensed, experienced, and trusted Cannabis retailer.

If our state really needs a stricter limit on THC in hemp products, at least make it a percentage or ratio, not a flat milligram cap. Unfortunately, I don't think my words speak as loudly as more tax money into the state's pocket.

YOUR FAVORITE WEED DEALER'S FAVORITE WEED DEALER

PANDA  FARMS

TO ORDER, CONTACT REMY@PANDAFARMSPDX.COM
PANDAFARMSPDX.COM @PANDAFARMS 775-219-4192

ELEVATE YOUR SENSES



Th³ FARMS
GEMSTONE COLLECTION
VINTAGE OREGON
SAPPHIRE
1 COUNT
CANNABIS **0.5g** PRE-ROLL
**ALL FLOWER
NO TRIM**
GREAT FOR:
EUPHORIC ★★★★★
HAPPY ★★★★★
ENERGY ★★★★★
OUTDOING ★★★★★
0.5g / 0.01% USABLE MARIJUANA
NET WEIGHT 0.82g / 0.02oz

SAPPHIRE

  
#Th3FARMS
www.th3farms.com

[WARNINGS: For use only by adults 21 and older. Keep out of reach of children.
Do not drive a motor vehicle while under the influence of marijuana.]



BY JERRY WHITING

LeBlancCNE.com/podcast

Hemp

IN THE MAINSTREAM

After the Farm Bill was signed into law last December, industrial hemp has catapulted into farmers' fields and into mainstream conversations all over the country. Hemp is legal at the federal level, and hemp and CBD are popping up everywhere you look. How big is hemp in 2019? VoteHemp reports over 17,000 licensed hemp farmers will grow at least a quarter million acres, the bulk of which is destined for CBD extraction. While many Cannabis farmers have switched to hemp, most of this year's hemp farmers are new to the plant. Many have never even seen a pot plant, let alone grown acres of it.

AND IT'S NOT JUST FARMERS that have jumped on the bandwagon. CBD products - good, bad and other - are available in stores and online. Many have found relief from hemp products and are quick to tell friends, family and anyone else who'll listen.

To their surprise and delight ordinary folks, non-pot smokers, are turning to hemp instead of prescription drugs. You can't tell them hemp is bad, and by association, many are reconsidering Cannabis as well. Once again, hemp is the ice breaker for much larger discussions about total legalization, amnesty for non-violent marijuana prisoners, and access to Cannabis as well as hemp.

All of this is astonishing because seven years ago, when Washington and Colorado legalized recreational Cannabis, it was a huge deal. We're talking walk-in dispensaries for adults over 21, non-residents included and all without a doctor's authorization, unlike medical marijuana.



**THE GOOD NEWS IS
THAT MORE PEOPLE WILL
GROW HEMP FOR FOOD
AND FIBER IN 2021**

Fast forward to 2019, and 11 states and the District of Columbia have legalized recreational Cannabis, and hemp is no longer Schedule 1 (the DEA) but Schedule 5 (the FDA).

How far we've come.

But when we look a

little closer not everything is coming up roses. I'm the last person to put a pin in the balloon, but the hemp market is far from mature.

In fact, the same loose rules and regulations that allow anyone to jump into the hemp business have sown the seeds of chaotic changes yet to come. Far too many people have jumped into the hemp game with dreams of getting rich.

Yes, those that started first made good money. But their success attracted new entrants. The pioneers came from Cannabis, whereas the newbies have a steep learning curve. Making mistakes and losing money are part of the risk.

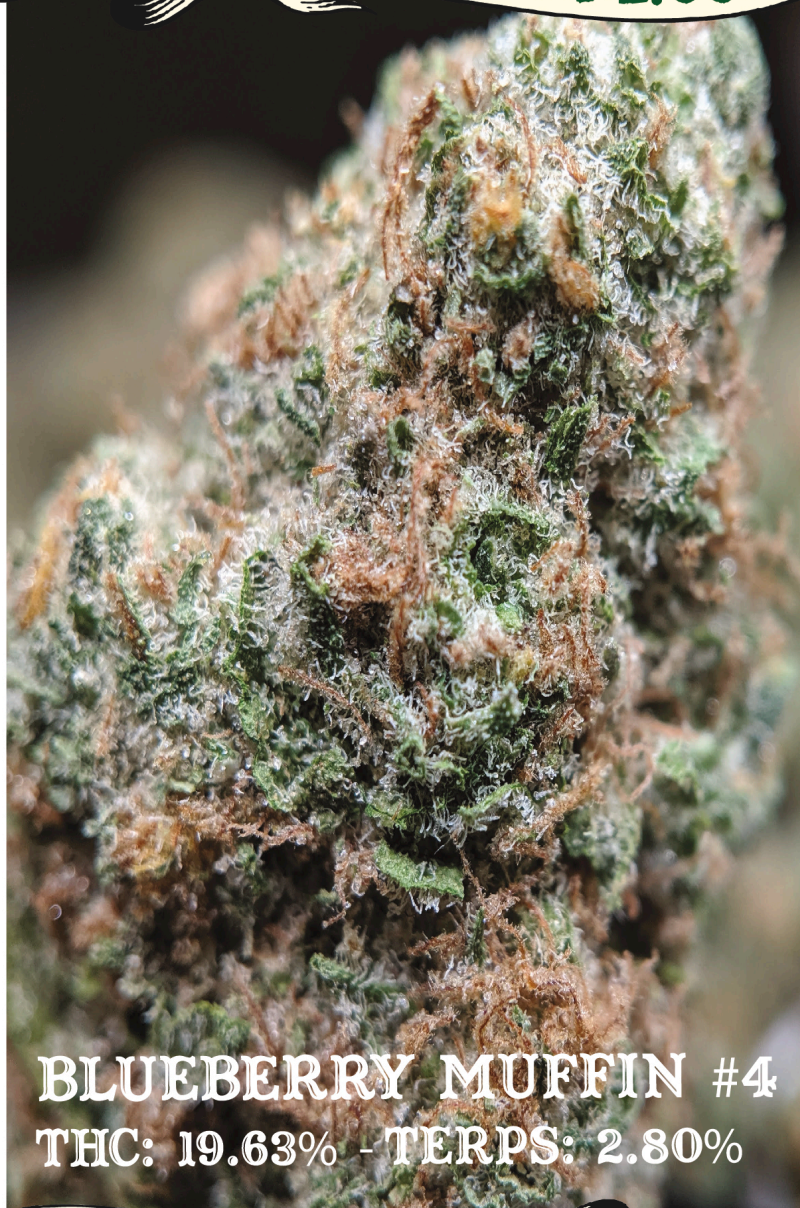
A huge 2019 hemp harvest will bump up against last year's crop, much of which is still unsold. This is true for plant material (biomass) as well as distillate and isolate. As popular as hemp is, so far the supply of ingredients is greater than the products being sold. When supply is greater than demand the prices go down.

Those farmers who penciled in \$50 a pound for biomass based on last year's prices may find prices closer to \$15-20 a pound this year.

Many new farmers bought "questionable" seeds - regular not feminized, low germination rate, prone to go over the legal limit of 0.3% delta-9-THC, etc. I predict a flood of biomass this year of wildly uneven quality and variable prices to match.

The good news is that more people will grow hemp for food and fiber in 2021. Fiber will break out first because growing it is easier, and while the processing infrastructure doesn't exist now, it's cheaper to build than a food ecosystem. Those that take a long view on the future and potential of industrial hemp are those that will finish the race.

2018 may have been the year The Agricultural Improvement Act of 2018 (a.k.a. The Farm Bill) was signed, but looking back we'll all agree that 2019 was The Year of Hemp. There's no turning back the clock or putting the tractor back in the barn. Yep, we've turned the corner on hemp.



BLUEBERRY MUFFIN #4
THC: 19.63% - TERPS: 2.80%



2018 WINNER:
1ST PLACE FLOWER - WHITE TAHOE COOKIES #1



2019 WINNER:
1ST PLACE PRE-ROLL - BLUEBERRY COOKIES
1ST PLACE BEST HYBRID FLOWER - DEAD HEAD OG
2ND PLACE BEST HYBRID FLOWER - DUTCH TREAT
2ND PLACE BEST TERPENE PROFILE - CHERRY CHEM



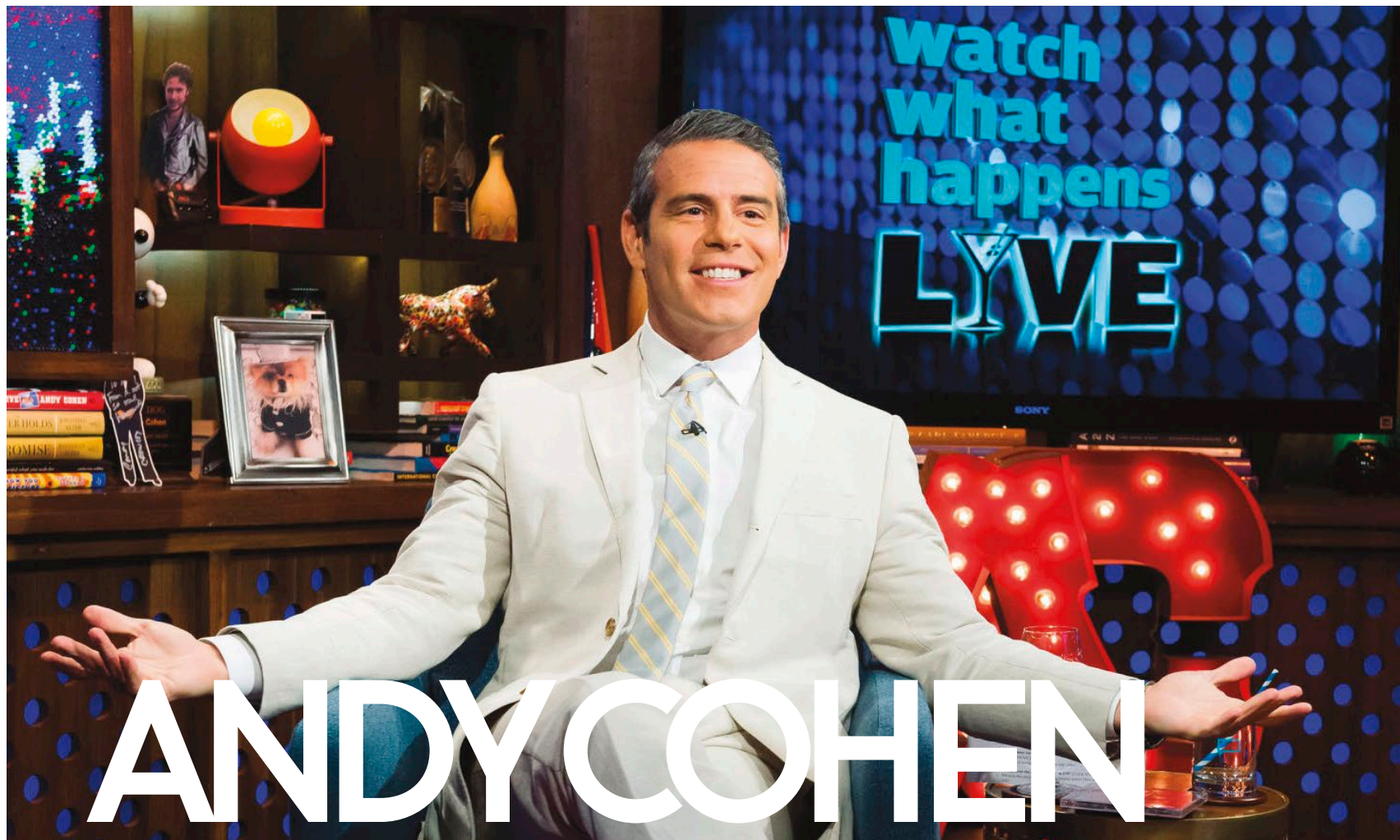
ELEVATE YOUR SENSES



www.th3farms.com

[WARNINGS: For use only by adults 21 and older. Keep out of reach of children. Do not drive a motor vehicle while under the influence of marijuana.]

Highlighting Cannabis pioneers who paved the way to greater herbal acceptance.



TALK SHOW HOST & CANNABIS ENTHUSIAST

AS THE HOST OF WATCH WHAT HAPPENS LIVE, ANDY COHEN IS A RECOGNIZABLE CELEBRITY FOR ANYONE WHO HAS EVER BEEN INTERESTED IN, WELL – A CELEBRITY. THAT’S BECAUSE HIS PROGRAM IS A POP-CULTURE LATE NIGHT TALK SHOW WITH A PENCHANT FOR GETTING THE INSIDE SCOOP ON CELEBRITIES FROM ALL WALKS OF LIFE.

But talk show host isn’t his only job - he has held virtually every position imaginable in the entertainment industry throughout his lengthy career.

Cohen started his career in journalism working for CBS News as a producer for shows like 48 Hours and CBS This Morning. On his way up he has worked as everything from show host to game-show host to actor to touring comedian, eventually becoming an executive producer on various television programs. Most recently, Cohen became Vice President at the Bravo Network.

Cohen’s affable persona is hard to miss. He’s an energetic person, who always seems to have the ability to be ‘on’ in any situation.

This personality stamina has obviously helped him immensely through his entertainment career. He’s also been a longtime Cannabis user, and has often talked about his love for the plant unabashedly. He often discusses it on his feature program Watch What Happens Live, though he does note that he doesn’t perform while high on the show. On the program, he once confided to John Mayer that he’d smoked with Willie Nelson, Snoop Dogg, and Bob Weir of the Grateful Dead.

While Cohen doesn’t like to be high on camera, he did note in an interview that he was once caught doing so. The incident occurred when he was invited to throw out the first pitch at a St. Louis (where Cohen grew up) Cardinals game. He said that af-

WHILE COHEN DOESN’T LIKE TO BE HIGH ON CAMERA, HE DID NOTE IN AN INTERVIEW THAT HE WAS ONCE CAUGHT DOING SO.

terwards, he’d consumed an edible and that later in the game a camera crew approached him.

“I forgot that they were going to be pulling me into the broadcast booth. They came to get me and I was like - oh shit,” he told the interviewer.

In May of this year, Andy had his first child. He told Howard Stern on his XM Radio show (a network where Cohen also hosts) that fatherhood

has led him to giving up Cannabis for the time being. “No, not since the baby,” Cohen told Stern. “I don’t feel comfortable. It’s not the time for that.”

Whether Andy Cohen currently consumes Cannabis or not isn’t the issue at hand though. By being so open about his Cannabis usage throughout his career, this performer and executive has helped to pave the way for a more normalized perspective on the herb that we all love so dearly.

LOKI MADE US DO IT

Super CBD-Rich Flavored Drops!

LOKI 2000 DROPS



Launching October 2019 Across the Nation



Product contains whole hemp flower with naturally occurring cannabinoids including CBC, CBG, and trace amounts of THC as allowed by law.



WHAT'S WORKED FOR HER

- > FAST-ACTING INDICA STRAINS TO HELP WITH SEIZURES AND ACES.
- > POWERFUL DOSES OF RICK SIMPSON OIL TO MANAGE PAIN LEVELS

Raina Casey is a veteran and one of the many Oregonians who have battled to convey the worth of Cannabis to medical professionals. After being diagnosed with CNS Lymphoma, Raina began using a Cannabis oil regimen in order to keep her tumors from turning metastatic.

UNFORTUNATELY, a relatable issue in Oregon and greater America is a lack of access to health insurance due to prohibitive costs.

It took years before Raina was properly diagnosed due to not having active healthcare.

Raina also works as a death doula who created her organization, Toke of the Town LLC, to increase Cannabis advocacy for those in the late stages of their lives.

Although it's an uphill battle, through her own fraught experiences with pain and the medical system, she provides a natural alternative to those looking for relief outside of prescription medicine.

Raina began using Cannabis medicinally in 2010, when she started experiencing unexplained

seizures. The stress of being uninsured left her without answers, causing more health anxiety.

"Being without insurance left me misdiagnosed as having my seizures being triggered by stress. I eventually was diagnosed with CNS Lymphoma," Raina recalls.

"In 2012, after a bad brain surgery and a stroke, I used it to recover much faster. After being diagnosed for ten years, my doc finally admitted that the Cannabis oil regimen I was on was keeping the tumors from becoming metastatic."

Medical professionals are often leery about condoning Cannabis as a legitimate treatment option. But after consistent talks with her doctor, Raina was open about her choices and successfully

RAINA ELISE

advocated for treatment options outside traditional western medicine.

Raina uses Cannabis to treat and assist with tumor retardation, remission and seizures - but also for the small things too such as headaches and nausea often stemming from her medications and treatment regimens. She was officially in OMMP carded in 2015, back when 24-hour dispensaries were still legal. Since legalization, Cannabis went from being seen as medicine into a commodity for profit. This isn't to say that Cannabis isn't still seen as a medicinal tool, but the OLCC ended 24-hour access, which potentially hurts needy patients in situations like Raina's.

When it comes to consumption, Raina prefers "fruity purple indica" strains as a go-to. She has found over the years that THC, THCa, CBD and CBG are the best cannabinoids that help manage her symptoms and keep her functional.

"I'm old school - a flower girl," Raina exclaimed. "But I use edibles, capsules and topicals when I've been hospitalized. Dabs are only something I do socially. Using flower has an immediate activation time, and I find something therapeutic about picking a nug, grinding it up, terpenes hitting my nose, rolling it up, and the dry hit to taste the terpenes. So I don't have to worry about a medible kicking in when I'm in pain or having a seizure. On the flip side of that, I've been given tinctures in the middle of a seizure to stop them in their tracks. Being consistent on the RSO regimen is a big deal and vital to symptom management."

Despite her advocacy and success with Cannabis, Raina still experiences challenges to using Cannabis as a treatment option. She is a veteran - and veterans were a huge part of legalization and the medical program - so she is working on increasing Cannabis advocacy and access for current and future veterans.

Beyond Raina's advocacy for veterans, she is also a death doula, meaning she provides safe Cannabis access for people in late stages of life. As controversial as this topic may be, Raina works with clients to provide as much comfort in the end of their life through Cannabis.

"I'm a Death Doula. Cannabis is the center focus for every client I have. Almost nine out of ten times, they'll ask me if I'm 420 friendly. They're nervous to ask, but so grateful to hear me say 'yes'."

HARVEST SEASON

IS HERE!

(and we're ready!)

NEXT DAY
APPOINTMENTS

FOUR DAY
TURNAROUNDS*

**Green
Leaf Lab**



TESTED
We test the best.



ORELAP ACCREDITED

100% IN-HOUSE TESTING

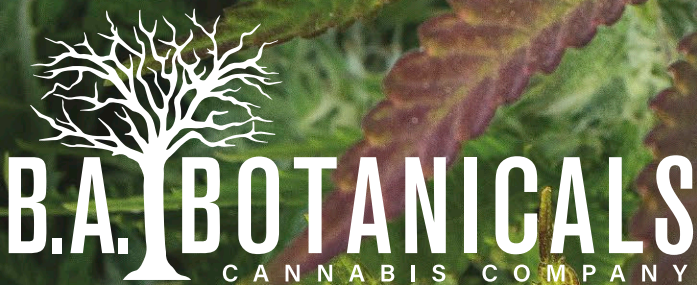
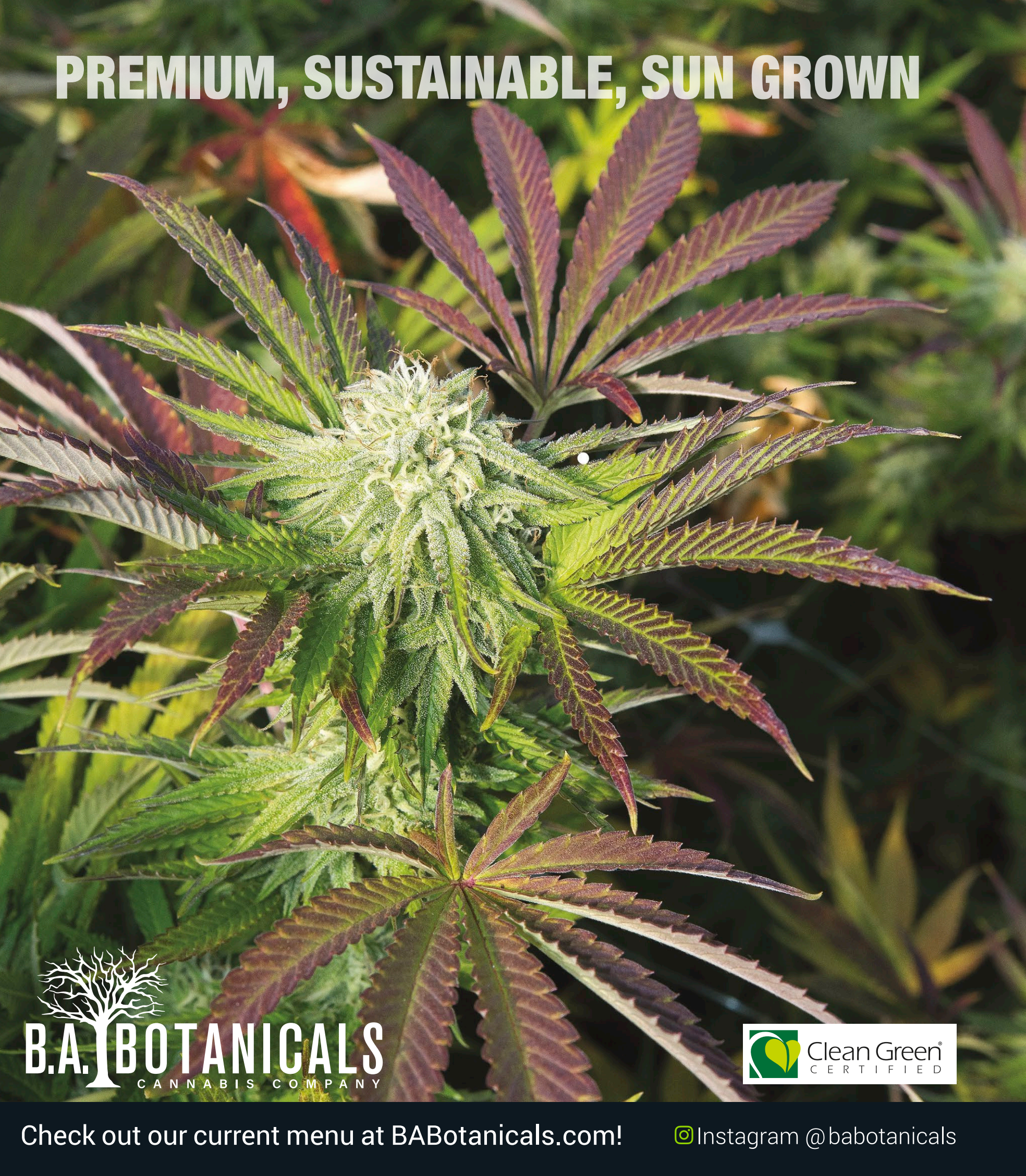
OLCC-LICENSED

greenleaflabs.com    503-253-3511


PORTLAND | WILLAMETTE VALLEY | CENTRAL OREGON | SOUTHERN OREGON

*Four-day turnarounds are not guaranteed, are only applicable to weekdays and do not include day-of sampling.

PREMIUM, SUSTAINABLE, SUN GROWN



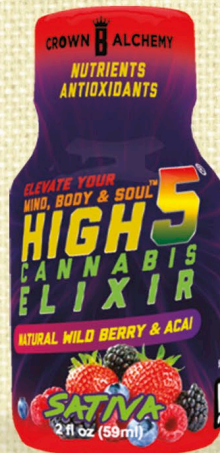
Check out our current menu at [BABotanicals.com!](https://babotanicals.com)

 Instagram @babotanicals



WELCOME TO THE *REVOLUTION*

INTRODUCING HIGH 5 CANNABIS ELIXIR



WILD BERRY & AÇAÍ

50MG & 1:1



LEMON LIME

50MG



POMEGRANATE

50MG



GREEN TEA MATCHA

50MG & 1:1

Made with care and love from seed-to-sip, using the very best natural and organic ingredients, ethically produced from sustainable resources. Our super-food main flavors also provide a source of nutrients/antioxidants/natural energy and combined with our terpene matched, Clean Green Certified, full-spectrum CO² extract provide a delicious, fast acting and effective experience every time.

ASK FOR A HIGH 5 AT YOUR FAVORITE DISPENSARY!

Dispensaries - get HIGH 5s on your shelf call. 503-303-0363

CROWNBALCHEMY.COM

INFO@CROWNBALCHEMY.COM

TED GURIN

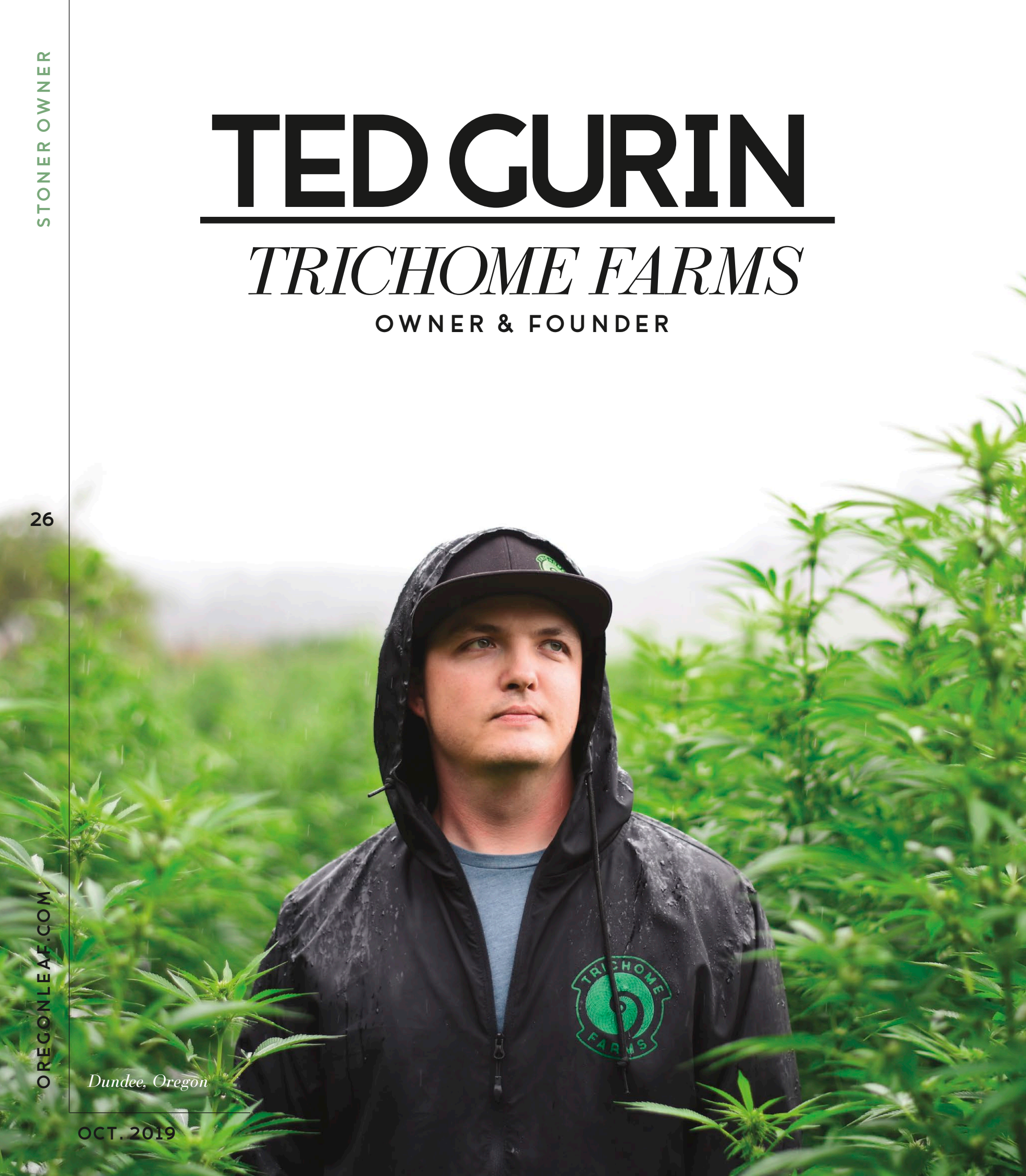
TRICHOME FARMS

OWNER & FOUNDER

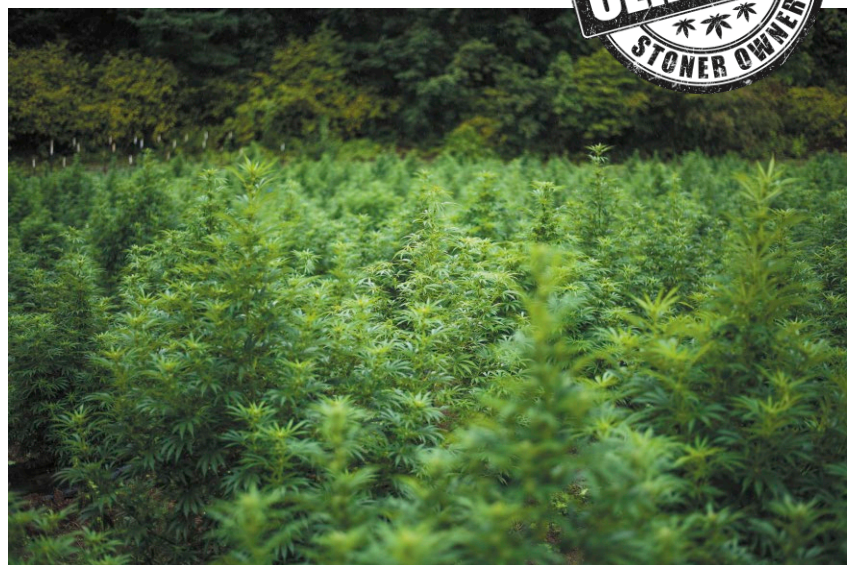
26

Dundee, Oregon

OCT. 2019



ORLEAF



“WE ARE FOCUSING ON GROWING OUR HEMP PLANTS AND TREATING THEM JUST LIKE WE TREAT OUR CANNABIS, TO PROVIDE A QUALITY SMOKABLE PRODUCT TO THE CUSTOMERS.”



GURIN HAS GROWN HEMP FOR TWO YEARS AND CANNABIS FOR 15 YEARS.

WHEN WAS YOUR FIRST INTRODUCTION TO HEMP?

Last year was our first year cultivating hemp. The recreational market was pretty stagnant and we used it as an opportunity to expand our business in the slow time, and to be able to bring our brand to people outside of Oregon.

HOW LONG HAVE YOU BEEN GROWING FOR?

I started growing medical Cannabis about 15 years ago, in 2004 after a back injury that qualified me for my medical card. I didn't get into hemp until just last year.

WHAT'S YOUR FAVORITE WAY TO CONSUME CANNABIDIOL?

For hemp-derived products, I prefer tinctures and edibles over smoking. Tinctures are effective and easy, but a tasty edible is always great.

WHAT ARE YOUR FAVORITE HEMP GENETICS IN ROTATION?

This year we are going for smokable flower over biomass, so we selected seven new strains to be able to have a nice menu. So far the one I am most impressed with is the Bubba Kush Hemp. It's still early in its flower cycle to really tell, but so far the way she grows and stacks looks great. Also, the R1 from KLR is crushing it right now!

WHY DO YOU THINK USING FULL SPECTRUM DISTILLATE TO INFUSE YOUR PRODUCTS IS BETTER THAN ANYTHING ELSE?

It is the closest to a full plant experience a person can get. There are many other compounds in the plant other than just CBD that are very beneficial to health. All of our tinctures are full spectrum and they contain CBG, CBN and CBC. As well as terpenes and a small amount of THC (under 0.3%). All of those working together creates a much better effect and achieves better results than isolating the molecules.

HOW DO YOU FEEL ABOUT THE CURRENT TESTING REGULATIONS IN THE HEMP INDUSTRY? WHERE DO YOU SEE ROOM FOR IMPROVEMENT?

It's a very unregulated market compared to the recreational rules that we are used to. I think there is a middle ground between the current OLCC requirements for THC products and the loose hemp regulations that are currently in place. I have heard many stories of people testing hemp products, just to find that there is no CBD at all in it, or not close to what the label says. It's a tough question because there is no tracking, so even with batch testing, it still leaves a lot of room for false products to make their way to the market. For the consumer, the best thing to do is do your research and know where the products are coming from.

WHAT MAKES YOUR FARM'S APPROACH TO HEMP CULTIVATION DIFFERENT THAN OTHERS?

We are a small farm and we can't compete on the biomass level. We are focusing on growing our hemp plants and treating them just like we treat our Cannabis, to provide a quality smokable product to the customers. We have a store in New Hope, Pennsylvania and the people there do not have access to high quality Cannabis like we do here. Smoking a nice nug of CBD flower is as close as they can get, so we just want to bring them the best possible experience.

WHAT HAS BEEN THE BIGGEST CHALLENGE ABOUT THIS PROJECT?

The weather this year isn't exactly cooperating at the moment! Other than that, it has been a pretty smooth year! I would say from last year and this year, the biggest challenge is finding good genetics. Last year we spent a lot of money and time just to find out in the last few weeks that the seeds we got were far from good and stable. This year, we feel confident in our genetics and everything is looking great.

Trichome-Farms.com @Trichome_Farms @Trichome_Farms_CBD

A Stoner Owner is a Cannabis business owner who has a relationship with the plant. We want to buy and smoke Cannabis from companies that care about their products, employees and the plant. You wouldn't buy food from a restaurant where the cooks don't eat in the kitchen, so why buy corporate weed grown by a company only concerned with profits? Stoner Owner approval means a company cares, and we love weed grown with care. Look for the Stoner Owner stamp when purchasing fine Cannabis, and let's retake our culture and reshape a stigma by honoring those who grow, process and sell the best Cannabis possible.

DO NOT OPERATE A VEHICLE OR MACHINERY UNDER THE INFLUENCE OF THIS DRUG.
FOR USE ONLY BY ADULTS TWENTY-ONE YEARS OF AGE AND OLDER. KEEP OUT OF THE REACH OF CHILDREN.



WELCOME TO THE PREROLL REFILL PROGRAM

BUY A CASE / SMOKE GREAT JOINTS / BUY REFILL / SMOKE MORE GREAT JOINTS / WASTE LESS / SAVE MONEY / BE HAPPY
WASTE CONSCIOUS REFILLS • CHILD RESISTANT PACKAGING • ROOM FOR 5 FULL JOINTS OR BLUNTS • SEALED ROACH COACH • RUBBER GASKET TO SEAL IN FRESHNESS • DURABLE & RECYCLEABLE CASE • PREMIUM NUG-RUN FLOWER

BY URBAN PHARMS

@URBANPHARMS // WWW.URBANPHARMS.COM





ESTD  2008

TJ'S GARDENS

NO-TILL LIVING-SOIL FLOWER



— EXCLUSIVE —
PRODUCT RELEASE

**Tao Gardens
Dead Head OG Flower**

— AND —

**Bo's Nose Knows
Tripps OG Live Rosin**

@taogardens | @bosnoseknows | @tjsorganicgardens

AVAILABLE ONLY AT TJ'S DISPENSARIES

TJ'S ON WILLAMETTE
1027 WILLAMETTE ST
EUGENE, OR 97402

TJ'S PROVISIONS
1910 EMPIRE PARK DR
EUGENE, OR 97402

TJ'S ON POWELL
7827 SE POWELL BLVD
PORTLAND, OR 97206

FOR MORE INFORMATION VISIT [TJS.COM](https://www.tjs.com)

ABRAHAM GOMEZ



As retail Cannabis has become more solidified in the Oregon market, the ability to outlast regulations, changing times and financial dire straights has become more and more difficult for stand alone shops. That's not to say it's easier for chain stores to survive, but these businesses do seem to enjoy a benefit because of their strength-in-numbers approach. Perhaps that's why Attis Trading Co. has been a trusted brand in the Oregon scene for years, with locations throughout the state. Of course, that trust comes because of the great products that they stock, but also because of who they employ. Case in point, our featured budtender this month - Abraham Gomez.

"MY FAVORITES ARE ALWAYS CHANGING, AS THERE ARE SO MANY STRAINS OUT THERE! I MIGHT COME ACROSS SOMETHING NEW TOMORROW THAT WORKS BETTER THAN TODAY'S FAVORITE."

WHAT WAS YOUR FIRST CANNABIS EXPERIENCE?

My first solid Cannabis experience was when I got my med card in California, and got to experience the types of applications used to either help or enhance whatever mood, feeling or symptom I was experiencing. Plus, back then the market in the OC was oversaturated with dispensaries, so products were practically being given away.

HOW LONG HAVE YOU BEEN A BUDTENDER? WHAT'S YOUR FAVORITE PART OF THE JOB?

I've been working as a budtender for about three years. What I love most about it is being able to help the customer/patient find that something they're looking for. Whether it's indulging or alleviating, I'm happy to know after the interaction that I had a positive impact.

WHAT'S YOUR FAVORITE METHOD OF CONSUMING CANNABIS?

Using a bong is definitely my favorite way of consuming, but I also love smoking joints.

WHAT ARE SOME OF YOUR FAVORITE STRAINS? FAVORITE EFFECTS AND TERPENE PROFILES?

Right now, Platinum Girl Scout Cookies has been a solid go-to for me. I really enjoy the stony effect that its myrcene levels give me. But my favorites are always changing, as there are so many strains out there! I might come across something new tomorrow that works better than today's favorite.

HOW DO YOU FIND THE RIGHT STRAINS FOR A CUSTOMER?

Based on the consumers' history, what they have had, and what has worked and what hasn't, I'm able to make recommendations that hopefully resonate. There are so many products out there that conversing amongst each other, staff and customers, about their experience has worked best - along with vendors spreading awareness and the web to further explain our products.

HOW DO YOU FEEL ABOUT THE CURRENT TESTING REQUIREMENTS BY THE OLCC? DO YOU PUT MUCH FAITH IN THC OR CBD PERCENTAGES?

In my opinion, I feel that the OLCC's involvement has made it so that consumers can be more confident of the strain being treated for any impurities, and the THC and CBD levels are more true to the strain. But I don't feel numbers always correlate with a stronger high.

WHAT MAKES YOUR SHOP'S APPROACH TO CUSTOMER SERVICE DIFFERENT?

I feel that here at Attis, whatever branch you may visit, we try to listen to the customer. We hear what it is that they want help with

or to alleviate, and we make unbiased recommendations uniquely tailored toward the individual.

WHAT ARE YOUR HOBBIES AND INTERESTS OUTSIDE THE CANNABIS INDUSTRY?

I love skating, photography, going new places, trying different things and meeting new people. But what takes up most of my time is making music and everything that comes along with pushing myself as an artist. Check out his music at Phunyun.bandcamp.com

ATTIS TRADING COMPANY
7737 Southeast,
SW Barbur Blvd,
Portland, OR
(503) 841-5462
AttisTrading.com

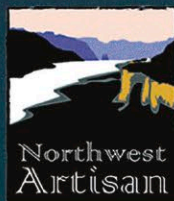
**EXPERTLY CRAFTED – LOCALLY OWNED
SHOP LOCAL FIRST, SO LOCAL LASTS**



BEEHIVE

EXTRACTS

PROUDLY WORKING WITH THE SOME OF THE FINEST GROWERS IN OREGON



WWW.BEEHIVEEXTRACTS.COM

Keep out of reach of children. For use only by adults 21 and older.
Do not drive a motor vehicle while under the influence of marijuana.



RE UP FARMS

TOP SHELF CANNABIS

Hand Watered | Hand Trimmed | Soil Grown

OUR GOAL is to provide Oregon with the best representation of strains cannabis consumers have grown to love. **WE BELIEVE** in using only the **HIGHEST QUALITY** inputs to produce the **HIGHEST QUALITY** indoor cannabis we can. **EVERYTHING** we do has the consumer in mind.

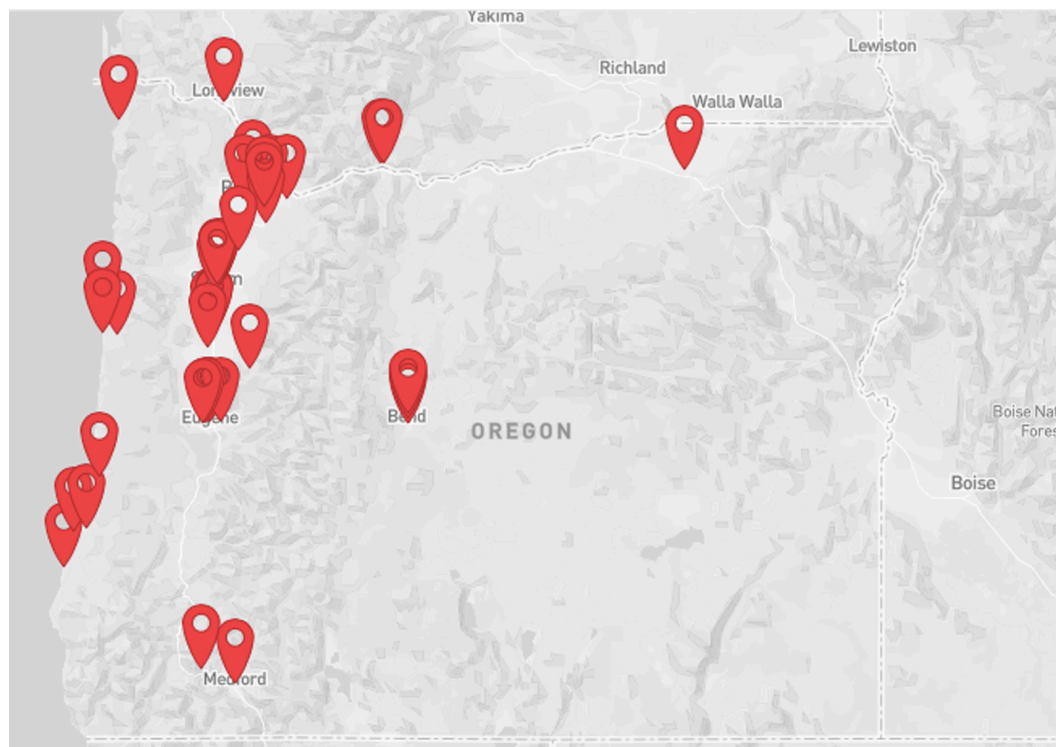
Available Now:

Allen Wrench
Purple Punch
Dr. Who
Raw Glue
White Tahoe Cookies
Lemon Sour Diesel
Granddaddy Purple
GG#4
Chem OG

Coming Soon:

• B. Banner OG
• Wedding Cake
x Zkittlez Cake
• Strawberry OG
• Planet Dosi
• Mint Chocolate Chip
x Gelato 33
• Topanga Canyon OG
x (NBK x Sunset Sherbet)
and many more....

Visit www.ReUpFarms/locator To Find A Store Near You.



JOLLY TINCTURES

CBD 10:1 • CBD Max • THC • Full Spectrum • CBD 1:1



PREMIUM CRAFT CANNABIS
FLOWER • EXTRACTS • CARTRIDGES • EDIBLES



541-508-2708 • JOLLYSWHOLESALE@GMAIL.COM • @DR.JOLLYS.BEND • JOLLYBEND.COM

Do not operate a vehicle or machinery under the influence of this drug. For use only by adults twenty-one years of age and older. Keep out reach of children.

LUMI WELLNESS SHOP

ENVIRONMENT

5/5 The second you walk into Lumi Wellness Shop, your first thought is, "Wow, whomever designed this shop really knows what they're doing." The flow through the space invites you in further at every step - past the first wall of products, beyond the well-selected art hanging on the walls, around the inviting chill space and into the back - where staff will walk you through customized approaches to adaptogenic wellness at the bulk ingredient consultation counter. It truly is a beautiful space, like a hidden oasis on the busy Powell Boulevard corridor. Owner Ashley Dellinger is a self-proclaimed "lighting geek" and it shows, as we even found ourselves asking where we could pick up her fixtures for ourselves.

PRODUCT SELECTION

5/5 The selection at Lumi comprises a diverse, impressive array of the high quality CBD-focused products on the market, and the shop's lineup extends well beyond CBD into other realms of plant wellness. Dellinger continues to learn as much as possible about therapeutic adaptogenic ingredients, with a focus on herbology and mycology (mushroom medicine). She also curates a fine selection of boutique products - from gorgeous wooden rolling trays to the top-end OTTO brand automatic grinder and joint cone roller - all in keeping with her eye for style and design. Lumi also carries an array of bulk flower, edibles, beverages, cartridges, pre-rolls and more. If you stick around to chat, Dellinger is likely to mix you an elixir of various ingredients at her counter in the back of the store. Try something for relaxation, then head to the houseplant jungle in Lumi's chill space and escape the daily stress.

CUSTOMER SERVICE

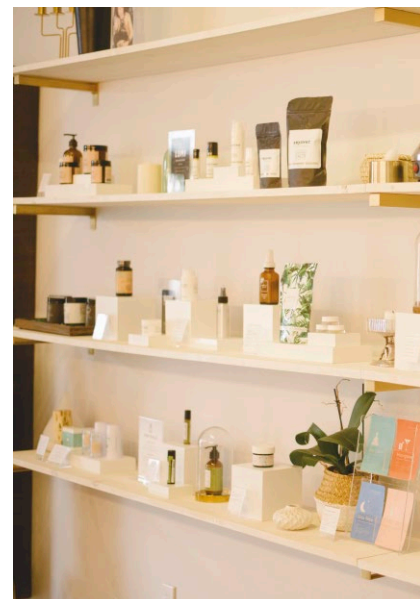
5/5 When you walk into Lumi Wellness, you're likely to run into its owner, Ashley Dellinger. A friendly, well-networked, knowledge-hungry maven of the hemp and Cannabis scene, Dellinger moonlights as a hemp broker and invests her interest into every aspect of plant-based medicine. She's more than willing to spend the time sharing her knowledge with you over a custom mixed tonic, and she will be the first to tell you that she - like all of us - still has a long way to travel in her exploration of adaptogenic wellness. We learned quite a bit on our visit, and we look forward to learning more from her and her staff as Lumi continues the journey.

STRAINS

4/5 Lumi carries a respectable selection of smokable quality hemp flower for the market, considering that hemp genetics still have a long way to come before they compete with THC-rich Cannabis strains. Dellinger hand picks her flower selection, and aside from a selection of pre-rolls, Lumi keeps between 8-12 strains in stock. Strains on our visit included the fruity Blue Genius (15% CBD), the popular Cherrywine (10% CBD), and Sour Space Candy (17% CBD). All strains, of course, are tested at less than 0.3% THC. Dellinger is constantly on the hunt for the cleanest, terpene-rich smokable hemp flower she can find, and she plans to continue expanding Lumi's flower selection.

QUICK HIT

19/20 As a new bright spot on the plant wellness retail map, Lumi Wellness offers a mindfully selected array of well-vetted products for consumers seeking hemp based wellness. The inviting environment and knowledgeable staff make this more than just a grab-and-go shop. We recommend that anyone interested in adaptogenic wellness stop in for a visit and walk out with new pathways to relief and relaxation, with a side of useful information.



11AM-7PM WED-SUNDAY (503) 345-8992
2929 SE POWELL BLVD #1, PORTLAND, OR
LUMIWELLNESSSHOP.COM @LUMIWELLNESSSHOP



DELLINGER IS CONSTANTLY ON THE HUNT FOR THE CLEANEST, TERPENE-RICH SMOKABLE HEMP FLOWER SHE CAN FIND, AND SHE PLANS TO CONTINUE EXPANDING LUMI'S FLOWER SELECTION.

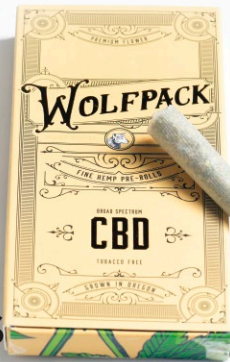


CANAPA *Acqua Tincture*

TASTE 3/5 **EFFECT 5/5** **PKGNG 4/5** **VALUE 5/5** **TOTAL 17/20** PRODUCING an array of CBD rich tinctures - using hemp extracted broad spectrum concentrates and isolate produced in their Oregon lab - Canapa bills itself as clean, compliant and consistent. To that end, they have QR codes on their packaging that lead directly to third-party Certificates of Analysis for the products, where people can verify that the CBD tincture they're buying is free of pesticides (and THC). The Canapa Acqua offers 900mg of CBD relief per bottle (30 mg per dropper), to be suspended in beverages or, for more efficient uptake, mixed with a little bit of water and then held under the tongue for 30-120 seconds. The milky white, cloudy elixir utilizes MCT oil as its carrier, sunflower lecithin, organic quillaja extract, and potassium sorbate in addition to its broad spectrum hemp extract. While it's not flavorless as advertised on the package, its mildly herbaceous character isn't going to offend in your favorite La Croix or your Earl Grey. Mild relaxing effects settled in around the 30-45 minute mark. \$85, 900mg CBD/30ml bottle [GetCanapa.com](https://www.getcanapa.com)

Lobo Hemp WOLFPACK CBD PRE-ROLLS

TASTE 3.5/5 **EFFECT 5/5** **PKGNG 4/5** **VALUE 4/5** **TOTAL 16.5/20** LOBO HEMP'S WolfPack pre-roll box comes packed with seven, one-gram cones stuffed with finely milled smokable hemp flower. We sliced one open and inside we found fresh, visually appealing green goodness. The pack we sampled showcased some piney terpene characteristics, and the pre-rolls were packed evenly and tightly so they smoked smoothly, held a cherry well, and didn't run. As with any inhalable delivery system, the pre-rolls offered an immediate relaxative effect. A one-gram cone is a bit much for one sitting for this reviewer! Casual smokers may want a half or quarter gram cone for quick smoke breaks. \$40/7-pack. [LoboHemp.com](https://www.lobohemp.com)





OWNER GARY TOMLINSON,
BEHIND THE COUNTER AT
THE SHOP IN BEND, OR.

STRICTLY CBD

In the years before founding Strictly CBD in 2018, longtime Bend resident and owner, Sunday Tomlinson, was regrettably diagnosed with cancer. At the time, Central Oregon had such a limited access to CBD that she was forced to drive to Portland to get her medication. With the help of full spectrum hemp products, Sunday beat her cancer into remission and regained control of her health. From that point the mission became clear, and with the help of her son Gary, she began her plans to open a CBD shop at home in Bend to share the magic that had literally saved her life.

STRICTLY CBD offers an entirely different approach than the run of the mill CBD shop, as they pride themselves in their ability to provide useful information, as well as a wide range of clean, tested products.

A large portion of these products are sourced from local companies in Bend!

This nicely curated shop is stocked to the brim with topicals, tinctures, edibles, sleep/bath products, smoke/vape products, pet products, and drinks. Each category respectively has its own case, including a fridge to keep all of those CBD beverages nice and chilly.

Come here to find brands like Ablis, Central Oregon CBD, Apex, Smokiez, Maui CBD and much more!

During my visit, I saw some incredibly unique products that ranged from deodorant

to protein powder and even livestock feed!

While offering a wide range of products including isolate, broad spectrum, and full spectrum, their staff often leads customers in the direction of the full spectrum products.

When it comes to CBD oil, full spectrum CBD oil's use of the whole plant and all the associated cannabinoids gives it advantages over pure CBD isolate.

Although CBD isolate is considered to be pure and more potent than other CBD products, this does not actually make it superior. The high potency cannot compete with the synergistic effects of the multiple cannabinoids contained in full spectrum CBD oil products.

WITH THE HELP OF THEIR AMAZING STAFF, CUSTOMERS DEALING WITH SERIOUS ILLNESSES SUCH AS PARKINSON'S AND MS COME IN ON A REGULAR BASIS, SAYING THAT THEY USE THESE AMAZING CBD PRODUCTS DAILY TO HELP SAVE THEIR LIVES.

Strictly CBD has had an increasing amount of senior citizens referred to their shop by local doctors and physical therapists. Thanks to the help of their amazing staff, customers dealing with serious illnesses such as Parkinson's and MS come in on a regular basis, saying that they use these amazing CBD products daily to help save their lives.

One of their customers has a small dog with a large brain tumor. This tumor is in an area of its brain where it affects the dog's motor skills, and unfortunately makes them walk differently. After providing the pup with some Rooted Hemp Tincture, he started walking normally again and seemed as good as new! This truly shows the value of CBD and how much it can help not only humans, but our furry loved ones as well!



1052 NE 3RD ST, BEND, OR
(541) 610-3637 @STRICTLYCBD
STRICTLYCBD.BEND.COM



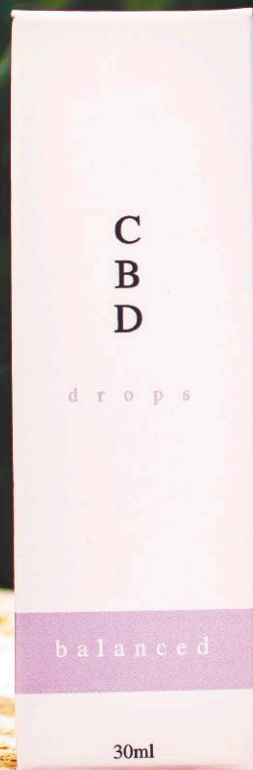
Produced by Apex Hemp Oil

CBD CHOCOLATE BAR & CBD HEMP LOTION

ON MY WAY home from my visit in Bend with Strictly CBD, I unwrapped this delectable, gold-wrapped chocolate bar. I would be lying if I said it was hard not to eat the entire bar in one sitting. After biting into one of the delicious squares, I tasted the sensational flavor of 100% Hawaiian Crown Estate Cacao. Smooth, silky and with fruity undertones, this CBD Chocolate Bar was quite the experience. Therapeutic indulgence at its finest! I highly recommend this product to anyone who has had a long day, and wants to take a load off and treat themselves! \$24, 150mg Organic Full Spectrum CBD

WITH 500MG of cold pressed CBD hemp oil packed into this breathtaking Lavender Rosemary Lotion, one is sure to find a sense of relief that melts away all stress and tension. After working out at the gym, Apex's CBD Hemp Lotion helps provide a ton of moisture to help heal my dry and cracked hands. In addition, I experienced a ton of anti-inflammatory and pain relieving properties after using a small amount. Find other fragrances like vanilla, mountain pine and citrus. \$30, 500mg CBD. ApexHempOil.com

SFFCBD.COM



20% off (SFF1CBD)

ROSE CITY LABORATORIES

EST. 2012

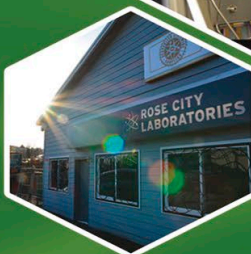


PHOTO CREDIT:
ERIK VERSTLER

**RECREATIONAL & MEDICAL
CANNABIS TESTING**

**STATEWIDE SAMPLING
WE COME TO YOU!**

COMPETITIVE RATES

**3 DAY TURNAROUND TIME
24 HOURS FOR EDIBLES**

HEMP FIELD SAMPLING

**FULLY ACCREDITED
STATE OF THE ART
LABORATORY**

**SEE OUR NEW LOCATION @ 7200 SW JOHNSON CREEK BLVD IN PORTLAND
503-307-0096**

www.rosecitylabs.com



LUMINOUS BOTANICALS

UNIVERSAL CANNABIS TONIC

For edible, topical, or sensual use.

A potent, whole-plant cannabis tincture that tastes great.

Available in three sizes, including trial-sized vials.

LEARN MORE

[f](#) [@luminousbotanicals](#)
www.luminousbotanicals.com

Do not operate a vehicle or machinery under the influence of this drug. For use only by adults 21 years of age and older. Keep out of the reach of children.

WWW.SHOPTKOCBD.COM

Connoisseur Kush CBD Pre-Rolls and Cigars

Delivered discreetly to your door



OREGON
LEAF™

40

CASCADECOLLECTIVE.CC @CASCADE_HEMP_COLLECTIVE
EASTFORKCULTIVARS.COM @EASTFORKCULTIVARS

PINEAPPLE



PINEAPPLE TSUNAMI IS A CBD RICH STRAIN.

The flower is a light greenish color and has a nice tropical nose to it.

This is one of many phenotypes that Cascade Hemp Collective is using in their breeding projects, as they're currently working to have compliant seed and clone cultivars for the new total THC rules in 2020.

I broke down a few buds for a joint and was impressed with the sticky and resinous consistency (7.6% CBD).

I smoked a few joints with some friends and really enjoyed the light cherry flavor and body euphoria, as I sank into the couch shortly after.

I would recommend this hemp flower to patients and consumers that need high functioning pain relief, and those looking to try Cannabis products for the first time.

TSUNAMI

GROWN
by CASCADE
HEMP
COLLECTIVE

BRED *by*
EAST FORK
CULTIVARS

Exotic Blendz



Exotic Blendz



www.exoticblendzpdx.com

For use only by adults 21 and older. Keep out of reach of children. Do not drive a motor vehicle while under the influence of marijuana.



socially conscious cannabis cultivation

Our commitment to growing quality cannabis has deep roots. After all, we are what we grow.

cascadehigh.com



Do not operate a vehicle or machinery under the influence of this drug. For use only by adults twenty-one years of age and older. Keep out of the reach of children.

SWEETBRIER FARMS

Wow. From the moment we arrived on the property, until the next morning when I woke up, all I could see was a sea of green whenever I closed my eyes. It's not every day that you get to view thousands of beautiful organic hemp plants as far as the eye can see. 134,000 to be exact. Located deep in the stunning Applegate Valley, Sweetbrier Farms holds a whopping 92 acres of industrial hemp.

CO-OWNERS Justin Fakler, Ryan Beyerlein, Randy Kottke and Kevin Walsh started this project just earlier this year in April.

"It wasn't a big planned venture, we just gave faith and made it happen!" said Kottke.

After securing their property from a preexisting certified organic alfalfa farm, their team purchased the previous crop and had it amended into the soil that now currently homes their lovely hemp plants.

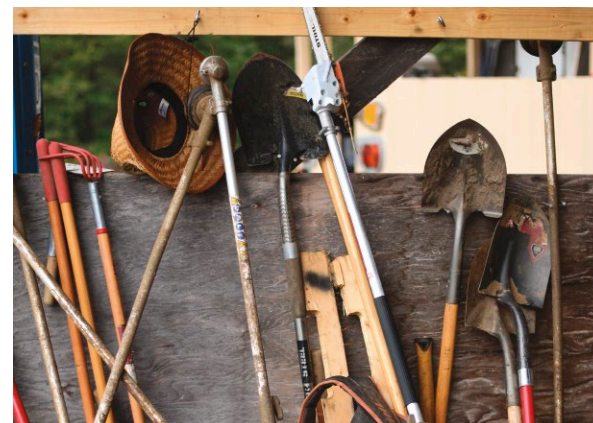
Ryan and Randy climbed into an ATV as Justin hopped behind the wheel. The three of them took us on a breathtaking, wind-whipped ride all around the property.

We soon arrived at arguably one of the most breathtaking plots on the entire farm. This was the space designated for the elusive Hawaiian Haze.

Hawaiian Haze is known for producing a high amount of beta-caryophyllene and humulene terpenes, offering a sweet Hawaiian flower smell.

This aroma is complemented by hot pink pistols, which leaves you scratching your head asking yourself, "What planet am I on?"

Needless to say, a tour around Sweetbrier Farms will have you feeling like you're in a different universe.





Co-owners Ryan Beyerlein, Justin Fakler and Randy Kottke



What drew you to growing hemp?

The idea of being able to cultivate a plant we all love on the greatest scale imaginable. Hemp has been around for millennia, but the varieties that have emerged in the last decade have set it apart from the hemp grown historically for fiber and grain. It has been a very challenging, yet rewarding and fulfilling experience going through the learning curves of an industry-in-the-making.

How do you choose the strains you want to produce with all of the varieties available?

We chose to grow Oregon CBD varieties: Lifter, Special Sauce, Sour Space Candy, Hawaiian Haze, and Suver Haze because of their overall performance, terpene profile, stability, vigor, and feminization rate.

Hats off to the Crawford brothers for making waves in the seed market! The abundance and value that has been generated from their hard work is immeasurable - from farmers to extractors to product manufacturers, and most importantly, to all the people in need of cannabinoids. As the industry matures, more concentrations of rare cannabinoids will be available through evolved and improved genetics.

As the industry matures, more concentrations of rare cannabinoids will be available through evolved and improved genetics.

We are excited to be a part of this space through our partner, Icaro Plant Science, and their research and development of new lines. The future holds some serious surprises.

What separates Sweetbrier Farms from others in the hemp scene?

Sweetbrier Farms is USDA certified organic by Oregon Tilth. This joint venture illustrates a unique collaborative story of a completely vertically integrated supply chain. Starting with the implementation of organic farming practices, to our well established industrial extraction methods, and finally into our custom formulation, Sweetbrier's supply chain is strong and continuing to scale, while retaining quality control and complete transparency.

We are a trifecta of industry established partners. Rogue BioSciences is a OneCert certified organic extractor and processor out of Medford that supplies custom tailored, full spectrum base formulas extracted from Sweetbrier Farms' organic biomass.

Rogue Farmer is a seasoned top-shelf recreational Cannabis producer setting the artisanal standard in Sweetbrier's quality control department. Icaro Plant Science has handled a lot of

the operational strategy and logistics of keeping Sweetbrier running smoothly, its primary engagement is in the research and development of novel hemp varieties through accelerated breeding technology. Be on the lookout for seed releases in 2020-21.

How does your team plan to harvest this large of a quantity? How many workers does it take to tackle a harvest of this nature?

A few dedicated badasses and a hefty amount of sub-contractors. We are harvesting approximately a third of the field for smokable flower. Top colas will be taken to our friends over at Rogue Valley Hemp in Medford and slow-dried on racks to maximize space efficiency. The remaining majority of our field will be chopped and wet-bucked, and then quick-dried by our friend and neighbor, Os-hala Farms, in his certified organic drying facility.

Do you have to purchase or lease any specialty equipment for this operation?

This project came to fruition in April and we had limited time to prepare. Fortunately, we have friends with all the adequate tractor power, specialized bedders and planters to have made this year a success. Special thanks to Tom Fay for helping with irrigation, Basin Fertilizer for their last minute fertilizer assistance and delivery, Caleb and Tim Hunter for their amazing cover crop, plowing, and discing services, and to Jared Waters with Corner Creek Consulting for the bed prepping and planting services.

What products will you produce with the crop?

We are shooting for 50,000+ lbs of high grade smokable flower for wholesale through Sweetbrier Farms' distribution network, as well for pre-packaged retail SKUs through Emerald Family Hemp. The remaining 100,000+ lbs of biomass will be extracted by Sweetbrier's in-house extraction partner, Rogue BioScience, to fulfill contracts of finished SKUs for Emerald Family Hemp's finished goods of tinctures, cosmetics, sports recovery, pet lines, and topicals.

Was this a labor of love, or has this been a difficult endeavor overall?

Both. We've had our moments. We always come out of them with smiles though. What's the reward without the struggle? I don't think we could imagine being a part of any other industry.

What words of advice does your team have for others entering this industry?

Be honest with yourselves on what compromises you're willing to make in your personal life to get the job done. Once you've made your commitments, strategize and execute. Adapt and roll with the punches. Communicate clearly, always use critical thinking, and don't let emotions get the best of you. Check in with yourself and your team. Assess the ever-changing set of circumstances that arise and make pragmatic decisions moving forward.

SweetbrierFarms.com @Sweetbrier:farms

ZOË THERAPEUTICS



Farm Manager Michael Beeler, Owner-Operator Chris Shirley and Facilities Manager Nick McGrath.



After about nine months of hunting and making painstakingly careful selections, the crew finally had the stock they were happy with that could then be used for actual seed production.

While Southern Oregon is largely regarded as one of the most prime areas in the world for Cannabis cultivation, not all of the region is actually ideal for the task.

Cannabis and hemp are both bio-accumulators, meaning they pull compounds in from the air and ground around them.

Thus, cultivating a crop right next to Interstate 5 would likely be a bad idea, with contaminants making their way into the end product due to proximity to our state's busiest freeway.

This is one of many reasons that Zoë Therapeutics calls Selma, Oregon home. Nestled in one of Oregon's most renowned agricultural regions, the Illinois Valley, their property lies about 20 miles from downtown Grants Pass. While the goal of the company isn't to produce the contaminant-free smokable hemp flower, or equally clean biomass for extraction, the fact that the property is set up for these tasks is a huge leg up and will likely help the company diversify in the future.

Founded in 2016 by Chris Shirley, Zoë Therapeutics is in its third full year of operations at this site. Today, Zoë Therapeutics is focused on producing scaled agriculture quantities of stable seed stock for hemp farmers across the world.

To do so, they've partnered with Sovereign Fields, the creator of Kush Hemp - a cross of the renowned classic Cannabis strain Pre-98 Bubba Kush, and a stable hemp varietal called Elite Hemp.

The process all starts with seed. First, the crew at Zoë endeavored upon a massive pheno-hunt, popping thousands of Kush Hemp seeds, sourced direct from the breeder, Sovereign Fields.

After about nine months of hunting and making painstakingly careful selections, the crew finally had the stock they were happy with that could then be used for actual seed production.

"All lines are pheno-hunted before production starts for seed," explains Shirley.

For Shirley, this isn't his first endeavor with scaled agriculture. Shirley found his way to Oregon by way of Florida, coming from a long line of orange farmers.

From a young age, Shirley had been taught by his grandfather how to water, prune, and how to identify and battle pests, giving him confidence in tackling this new project.

In total, Zoë Therapeutics is comprised of eight acres of outdoor production for flower and biomass, 6,000 square feet of greenhouse space, and 20,000 square feet of indoor space that has both a cultivation area, as well as a seed cleaning and sorting area. The property is a 52 acre parcel that is also home to a Tier 2 OLCC license, operated by another business.

This coming year, the team hopes to produce a whopping 70 to 80 million seeds. At an average of 1,500 plants per acre, that's somewhere in the neighborhood of 50,000 acres of high

quality, properly hunted, CBD and terpene rich hemp.

With multimillion dollar lawsuits over bad hemp seed going down, and so many new companies endeavoring into hemp genetics these days, it's nice to know businesses like Zoë Therapeutics are expending the effort to execute a proper pheno-hunt before selling seed to the public.

Combining their goals of being consistent and trustworthy, being backed by experience and supported by a diverse staff of more than 30, we can't wait to see what Shirley and his crew are capable of in the years to come.

ZoeTherapeuticsLLC.com @ZoeTherapeutics



Team Lead Nikki Moore and Clone Technician Angel Spliethof



Farmhands Sherrina Wallace and Garrett Herrington





Oregon, Go Fudge Yourself!



Laurie + MaryJane now offers a 50mg THC full-spectrum cannabis fudge. No distillates, no solvents — simply organic coconut oil infused with premium maryjane. We start with organic, fair-trade chocolate blended it with full-spectrum coconut oil and layer in natural ingredients, flavorings, and color to produce deliciously decadent fudge. Experience the difference of a full-spectrum edible: tell your favorite shop that you want to Fudge Yourself!

MORE
FLAVORS
COMING
SOON!

**FUDGE
YOURSELF™**
FULL-SPECTRUM CANNABIS FUDGE

DO NOT OPERATE A VEHICLE OR MACHINERY UNDER THE INFLUENCE OF THIS DRUG. FOR USE ONLY BY ADULTS TWENTY-ONE YEARS OF AGE AND OLDER. KEEP OUT OF THE REACH OF CHILDREN

Calling

OREGON HEMP CULTIVATORS!

Are you ready to
MAKE HISTORY?

Be among 40 Oregon Growers
in the 1st Annual Rogue Valley

GOLDEN GROW AWARDS

HEMP UNIVERSITY

Partnering with So. OR Hemp Co-Op & GreenLeaf Lab
in the Rogue Valley's first Hemp Cup! Compete for:

- ✧ Highest CBD ✧ Highest Terpenes ✧ Judges' Favorite
- ✧ People's Choice!



SATURDAY, DEC. 7

The Schoolhaus Ballroom - Jacksonville

11-4: Hemp U's Post-Harvest Symposium /Golden Grow Exhibit & Voting

7-11: Golden Grow Awards Gala - Awards, Dinner, Live Music!

ENTER BY OCT. 31 TO WIN!

The first 40 Growers to register will compete!
Contest Deadlines, Rules, Fees & all Event Info:

www.TheHempUniversity.com



CBD PRODUCT HIGHLIGHTS

Skincare

HIGH SOCIETY HAIRCARE BOMB SHAMPOO + LOUD CONDITIONER

HighSocietyHaircare.com

High Society Haircare's mission is to utilize CBD to help beautify and fortify hair while cutting down on frizz with a "no bad stuff, no bad days" attitude. Perfect for hair of all types, beards included, and a whole line of skin/body care products coming this fall, High Society Haircare delivers skin and hair wellness with an extra dose of good vibes. -WES ABNEY

EXTREME TERPZ TATTOO CARE

ExtremeTerpzCBD.com

Tattoos and Cannabis go hand in hand. From pre-ink sesh to recovery, the plant has you covered. Extreme Terpz Tattoo Care is perfect for the healing process, combining organic healing oils with CBD isolate to preserve color and cut down on pain with fresh ink! -WES ABNEY

DELTA BOTANICAL RELIEF SERUM *DeltaCBD.com*

This skin serum is a revolutionary product from Delta Botanicals, combining the power of CBD with the science of skin care. Screwing the lid off reveals a rolling metal ball, allowing for easy application with no mess. I used this serum in an attempt to clear up rough and bumpy patches on my arms. Two days after applying the serum once daily, the patches were clearing up and my skin was feeling as smooth as ever. This product has wonderful applications in targeting chronic acne and recurring dermatitis. -WYATT EARLY

SAINT JANE 500MG CBD LUXURY BEAUTY SERUM

StJaneBeauty.com

I was immediately impressed (and suspicious) of the opulent packaging. In my experience, the best product packaging is often a cover-up for a shit product. Lipstick on a pig if you will. But, I am a huge advocate for Cannabis skincare and I was curious to see how well this product performed. The feel of the serum is silky and absorbs quickly into the skin, leaving you with a clean glow. SJ's contains active ingredients like sea buckthorn, calendula, CBD and rosehip boost radiance, while pomegranate and helichrysum deliver rich antioxidants. My skin was left feeling supple without becoming greasy. Nevertheless, I am a fan of this product, but the only downfall I could find is that it's cost-prohibitive at a whopping \$125 for one ounce of "luxury" CBD. -SIMONE FISCHER

NEW DAY REJUVENATING NIGHT CREAM 200MG CBD, 50ML

NewDay-Wellness.com

As a skincare fiend, I am obsessed with Cannabis beauty products. The New Day Night Cream boasts 200 mg of CBD in every jar, and although I'm not a huge fan of the bland packaging and plastic container, I do love the consistency of this product. It's thick and luxuriously creamy - making it the perfect candidate for night creams. As the season moves into fall and winter, my skin dries up faster in the cold than in the heat of the summer. After cleansing, I applied the cream (which feels more like a moisturizing mask), leaving my skin feeling like velvet. The next morning was hectic and I had to skip my skin regimen, but the product worked so well, I didn't need to moisturize the next day. In my experience, it gave me 24-hour moisture, which I loved. The smell is mild and nearly unnoticeable, and the CBD helped reduce inflammation stemming from a hormonal breakout. -SIMONE FISCHER



Pain & Inflammation



FAIRWINDS FLOW TISSUE & JOINT GEL AND FLOW ROLL ON *FairwindsCBD.com*

Fairwinds Flow is renowned for its ability to penetrate the skin and deliver targeted pain and inflammation relief with fast acting effects. Available as a gel, cream or a roll on, Flow combines essential oils and a Fairwinds exclusive ingredient, Canna Vera from Cannabis lipids to provide support and wellness for all topical applications. -WES ABNEY

SUZI'S EASY ROLL ON PEPPERMINT HEMP OIL

SuzisLavender.com This sleek little bottle of hemp oil is infused with peppermint and makes for a perfect travel-sized topical pain reliever. The product is simple but effective, and contains only three ingredients - full spectrum (a must when talking about CBD products) hemp oil, coconut MCT oil, and organic peppermint. After applying some to my tendinitis-ridden elbow following a workout, it only took a few moments for the peppermint's cooling effects to kick in. Backed by a solid dose of CBD, the normal post-workout flare-up that would occur was halted in its tracks. -NATE WILLIAMS

COLORADO CURES HEMPHREEZE MUSCLE FREEZE PAIN RELIEF GEL *CBDplusUSA.com*

Neck pain is no stranger to anyone spending long hours in the office, and this gel is the perfect remedy. After applying the gel, my neck and back pain immediately vanished due to the gel's strong cooling agent. Hours after application, my pain was still gone despite the cooling effect having gone away. Each pump is nearly 5 mg of CBD, so I found myself using between two and three pumps to reach my desired dosage.

-WYATT EARLY

CBD PLUS USA MUSCLE & JOINT CAPSULES *CBDplusUSA.com*

At 25 mg CBD per capsule, I take two of these every day as soon as I wake up, and experience all-day relief from my muscle and joint pain. Along with CBD, you can find other dietary supplements in this capsule like glucosamine, cat's claw, curcumin, white willow and more. I found these were a great way to take in dietary supplements already in my diet, while adding CBD into the mix.

-WYATT EARLY

EXTREME TERPZ EXTREME SALVE *ExtremeTerpzCBD.com*

In extreme need for CBD pain relief? Look no further than the Extreme TerpZ all-purpose salve, which is perfect for pain, inflammation, or any other topical application with the full benefit of CBD and natural terpenes. -WES ABNEY



Focus

POT-O-COFFEE WAKE N BAKE DARK ROAST COFFEE *Isodiol.com*

I often already put CBD tinctures in my coffee and tea in the morning, but it's not so easy to know exactly how many milligrams is going in each cup. There also comes the issue of whether or not your CBD tincture is water soluble. These k-cups made it easy to know exactly how many milligrams of CBD is in each cup. Another benefit to these is that the taste is not altered in any way from regular coffee. The flavor was rich and dark, and I really enjoyed making these to wake up each morning. I felt energized from the caffeine, but any anxiety or jitters were alleviated by the CBD. -WYATT EARLY

LIGHTEARTED FARMER CBD + CBG TINCTURE

TheLightheartedFarmer.com
Boasting 2000+ mg of hemp extract, Lighthearted Farmers has combined a hefty amount of CBG and CBD to create an extremely effective and overall balanced product. After opening up the lovely gold bottle and taking half a dropper full, I felt my level of concentration greatly increase. CBG offers benefits to the brain, bladder and bowels, making this an ideal way to stay sharp for those aging - or anyone for that matter. -MAX EARLY

NASADOL FAIRWAY FOCUS

BiospectrumCBD.com Perfect for on-the-go usage, Nasadol's Fairway Focus is a sleek and convenient way to stay alert while efficiently getting your daily dose of CBD. Being that this product is used nasally, you are able to take much smaller doses than oral routes, with the same if not greater effects. Pharmaceutical grade CBD is blended into their saline-based suspension using patent pending proprietary technology to create this revolutionary product. I personally use Fairway Focus before every meeting to stay engaged and keep a clear head! -MAX EARLY

ENTANGLED BIOME ENERGY + IMMUNITY TINCTURE

EntangledBiome.com While most CBD products typically tend to offer calming and relaxing properties, Entangled Biome's Energy and Immunity Tincture leaves you with an uplifting and energetic effect. Their combination of Organic Chaga, Reishi, Cordyceps mushrooms and full spectrum hemp oil work in synergy to provide an astounding amount of health benefits. With their treatment pump dispenser, you are assured the same dosage each time (4 mg), eliminating the guess work of dropper tubes. Find this tincture alongside a wide variety of topicals, bath products, pet products and more at their lovely shop located in Eugene, OR! -MAX EARLY

Anxiety



MAUI CBD KAVA AKALA MauiCBD.com

For the last 3,000 years, Kava has been used by many in the Pacific Islands for its numerous positive benefits. Maui CBD has taken this incredible root and combined it with full spectrum CBD oil and MCT oil from coconuts, all grown organically on their beyond organic permaculture farm located in Hawaii. This formula works together to offer a perfect way to relax, rejuvenate, and stay balanced. -MAX EARLY

EXTREME TERPZ EXTREME CARAMELS 100 MG/5 PACK

ExtremeTerpZCBD.com

Another fantastic offering from Extreme TerpZ are their blueberry flavored Extreme Caramels! These delectable morsels melt away in your mouth, leaving you wanting more, all the while melting away anxiety with a solid 20 mg dosage of full spectrum oil per caramel. The blueberry flavor puts a unique twist on this classic sweet and buttery treat!

-WES ABNEY

DELTA BOTANICALS HEMP OIL SUPPLEMENTS CBD GUMMIES

DeltaCBD.com What better way to combat anxiety and depression than with delicious and effective CBD gummies? Delta Botanicals uses no corn syrup in producing these gummies, and the flavor and consistency reflect that in clean, natural flavors. At 300 mg hemp oil per 30 gummies, these make it easy to get a significant dose off of just a few. I used these throughout my entire day, and found them very effective for treating ongoing anxiety.

-WYATT EARLY

CENTRAL OREGON CBD PREMIUM HEMP OIL CBDcentralOregon.com

My first time trying Central Oregon CBD's products was earlier this year in Redmond at the THC Fair. Dealing with general anxiety my entire life, large crowds can often overwhelm me, throwing my anxiety into overdrive. After taking a 100 mg capsule provided to me by owner Tim Fratto, I felt all stress and worries start to melt away. Their full spectrum products are created using natural processes, and are additionally activated and purified to help enter the endocannabinoid system quickly. -MAX EARLY

NANA'S LEMONADE 25 MG CBD + 10 MG FRUIT CHEWS NanasSecret.com

Nothing brightens a day better than lemonade and a piece of candy, which is why we chose to include the Nana's Secret Fruit Chews and Strawberry Lemonade in our anxiety/depression category. Nana's Secret products are made with love and combined with CBD to deliver happy vibes with a sweet taste. -WES ABNEY

Recovery



CHARMED HEMP ROSIN TINCTURE *CharmedHemp.com*

Charmed Hemp delivers a truly unique product in their Rosin Tincture. Sourcing high grade hemp flower, the company presses it into rosin using heat and pressure to create a solvent free concentrate that is blended into the tincture. High in CBD and natural, full spectrum terpenes, this lightly sweet tincture is perfect as a pre-adventure tool for preventing aches, pains and anxiety. -WES ABNEY

MT. MARATHON MUSCLE SALVE

RenewCBDStore.com

After long sessions at the gym, I often find myself sore and depleted. With 907 EMU's Mt. Marathon Extra Strength Muscle Salve, I feel a total sense of rejuvenation. With an easy application method, I am able to directly target wherever I am feeling soreness. While other salves only offer immediate pain relief via cooling agents, 907 EMU has packed 250mg of CBD into this incredible formula to provide long lasting pain relief. -MAX EARLY

FAIRWINDS DIGESTIFY CBD TINCTURE

FairwindsCBD.com

Recovering from a late night spicy food mistake? Fighting heartburn or a stomach condition? Digestify is a proven blend of essential oils and full spectrum CBD and terpenes to clear nausea and calm the digestive system. -WES ABNEY

TOPICAL WAY MUSCLE CREAM

TopicalWay.com

Topical Way is a time tested, organic natural remedy that is safe for all ages and the environment while delivering comfort and relief for injuries, ailments and pain relief. -WES ABNEY

NANA'S SECRET COMFORT PATCH

NanasSecret.com

Nana's Secret Comfort Patches are the perfect way to discreetly handle pain all day in a targeted delivery system. Apply the patch to where it hurts, or along a heavy blood flow area like the underside of the wrist, for relief that goes right into the bloodstream and quick, effective results. -WES ABNEY

HEMPIRE FULL SPECTRUM SALVE

Hempire-Co.com

Hempire is an Alaskan born company providing CBD relief all over the country, with quality products like their Full Spectrum Salve. Made with 1,000 mg of full spectrum CBD with emu and coconut oil, beeswax and vitamin E, this salve is useful for everything from burns to daily aches and pains. -WES ABNEY

CHARMED HEMP CBD BATH BOMB

CharmedHemp.com

Shoutout to Francesco and his team at Charmed Hemp for another locally made, high quality CBD product. After running around all day with magazines, my back, neck, and feet can feel the consequences. I threw a 100 mg CBD bath bomb into a nice hot bath, and let my worries soak away. After about 20 minutes in the bath, I got out feeling rejuvenated and pain free. My skin felt soft as well, which was a nice surprise for my usually irritable skin. -WYATT EARLY



Sleep

55

FAIRWINDS DEEP SLEEP

FairwindsCBD.com

Fairwinds Deep Sleep tincture blends proven herbal compounds with CBD and CBG oil to deliver restful relief without habit forming compounds found in over-the-counter sleep aids. An all natural night's sleep is only a dropper away with Fairwinds Deep Sleep tincture. -WES ABNEY

COLORADO CURES GSC CBD + TERPENES 1G VAPE CARTRIDGE

CBDplusUsa.com

These vape cartridges were the perfect way to get a large dose of CBD quickly, which was perfect for bedtime. At 432 mg of CBD and 23 mg of CBG, it was easy to intake a significant dosage quickly. My main qualifying condition is trouble sleeping, and this cartridge combined with my daily smoking regimen helped me fall asleep fast. Cannabis derived terpenes give this pen a natural and clean flavor. We sampled GSC, but these are also available in Banana Kush, Super Sour Diesel and Blue Dream. -WYATT EARLY

TERPIN STATION CBN TINCTURE

TerpinStation.com

CBN is a wonderful cannabinoid beneficial for sleep and pain, all without the addictive qualities of opiates or over-the-counter sleep supplements. The CBN tincture by Terpin Station is a natural sleep aid that can also help alleviate pain and deliver sleepy vibes at the end of a long day. Naturally derived from hemp and produced in Baltimore, this CBN tincture is a perfect way to ensure a dreamy night's sleep. -WES ABNEY

SACRED FLOWER FARMS NIGHTY NITE ROLL ON

SacredFlowerFarmsCBD.com

This easy application roll-on from Sacred Flower Farms is a must have for your night side table! With a sensational combination of full spectrum CBD, MCT, chamomile, ginger, lavender, ashwagandha, mandarin, sandalwood, and moringa oil, this product really comes in clutch to help me unwind and relax after a long day at work.

-MAX EARLY

HEMP KETTLE TEA CO. NIGHT BLEND W/ HEMP

HempKettleTea.com

As a big fan of nighttime teas, I was really excited to see a tea with some similar ingredients to the ones I already drink. Everything in the tea mixture is organic, including ingredients like valerian root, which is known for helping with sleep. Each bag contains 1000mg of CBD rich hemp, and such a high number gave me confidence I could get a significant dosage with a small amount of tea. I was able to sleep through the night uninterrupted, and the taste with some honey added was sweet and enjoyable. Tea ball or reusable tea bag is needed to use this tea! -WYATT EARLY

Furry Friends

SUN GOD MEDICINALS CBD AJA PET OIL SunGodMeds.com

When your furry friend is in pain or distress, you want a product that brings relief rather than uncertainty. The CBD Aja Pet Oil comes with a comforting supply of information to ensure appropriate dosing and organic origins. Their product starts with USDA certified organic hemp and uses a whole plant extraction process for full spectrum benefits. St. John's Wort and skullcap are added for a complementary effect aimed at inflammation, pain and anxiety. The included oral applicator made accurate measurement and administration easily doable by mouth or treat, although my pup enjoyed the olive oil-based tincture all by itself! -AMANDA DAY



ACE PET TINCTURE CannabisACE.com

ACE's pet oil is designed to help all pets feel more vibrant, achieve wellness, and may treat many types of illnesses such as joint pain, inflammation, neurological disorders and anxiety. It is also especially useful as a preventative measure against future disorders.
-WES ABNEY

FAIRWINDS COMPANION FULL SPECTRUM CBD OIL FairwindsCBD.com

Fairwinds believes that our furry friends deserve a happy and healthy life, and their Companion CBD is perfect for a variety of purposes - with a pet tasty beef flavor. From pain to stress to anxiety, treat your puppy well with a dose of the Companion tincture.
-WES ABNEY

Silver Mountain Hemp Guitars



MORRIS BEEGLE BELIEVES ROCK 'N' ROLL CAN SAVE THE WORLD, ESPECIALLY WHEN THAT ROCK 'N' ROLL IS MADE FROM HEMP. THAT'S WHY HE STARTED SILVER MOUNTAIN HEMP GUITARS, A COMPANY THAT SPECIALIZES IN HEMP-CRAFTED MUSICAL INSTRUMENTS AND EQUIPMENT.

Based in Fort Collins, Colo., Silver Mountain creates special order guitars and ukuleles, along with guitar speaker cabinets, guitar picks, straps and volume knobs, all either partially or completely made from hemp fiber.

For Beegle, the musical instrument company is a way to merge his past with his present and build a new future. After a long career on the distribution side of the music industry, Beegle entered the hemp industry when Cannabis legalization appeared on the horizon in Colorado. "Everyone has a different entry point to this plant," he said. "A lot of it is through the medical side or the recreational side, and a lot of people have gone to jail for this plant, when they shouldn't."

Though he didn't jump into the industry until 2012, Beegle's path to Cannabis sativa began back in the 1990s, the same way it started for so many people - when he read "The Emperor Wears No Clothes," by Jack Herer. "It's been a huge part of human history, with building materials, and clothes, and rope," Beegle said.

"It's been a part of society for a long time, and a lot of that information had been buried and hidden away by the government. The Jack Herer book opened up a lot about this plant, and what it can do."

For Beegle, the hemp plant can



do quite a bit. He's currently building a number of companies in the hemp space, including the Colorado Hemp Company and NoCo Hemp Expo, along with Silver Mountain. Replacing modern conventional materials with hemp isn't just a business move for him - it's a call to action coming directly from the environment. "The industrial revolution introduced us to the world of synthetics, and now, over a hundred years later, we're realizing what these synthetics are doing to the rivers we fish in, and our soils," he said. "There's toxic shit everywhere. You can walk along the beaches and see these micro-plastics everywhere. And the fish are eating that, and we're eating the fish."

The way Beegle sees it, the future of manufacturing will rely on bio-plastics from hemp-corn composites rather than the petroleum-based plastics humans have been using for decades. That's not just one possible future, either. He says it's the only possible future. "We're here for a finite period of time, and

our species is destroying the home that we've been given," Beegle said. "We're fortunate to be here, and we're destroying it. We're shitting where we sleep, and instead we should be better stewards of the Earth."

Making hemp-composite electric guitars and ukuleles alone may not spark the revolution, but for Beegle, Silver Mountain is just one piece of a larger mission to replace everything possible

with hemp and other renewable, sustainable resources. "The guitar thing is more of a novelty than anything," he said. "But you can make pretty much anything out of hemp, and that's something that we should take seriously as we move forward with society."

Beegle's guitars could become more of a novelty, and they're certainly continuing the conversation. He has a waiting list for his made-to-order guitars and ukuleles, which use U.S. grown hemp. His guitar speaker cabinets, picks, guitar straps, and volume knobs are all readily available.

"It's still small and boutique, but we're dialing in the supply chain, which has been work," he said.

Once everything is dialed-in, he plans to carry actual inventory of guitars and ukuleles and fill orders immediately as they come.

For now, his company currently offers pre-orders on electric guitars in an SG-style, Telecaster style and Les Paul Jr. body style, with a Stratocaster-body style on the way. Prices range from \$2000-\$3000. Ukuleles range from \$200-\$225, and speaker cabinets range from \$1000-\$2250.

Think about it - a guitar player could pick up one of his guitars, a strap, some picks, and one of his speaker cabinets paired with ToneTubby Hemp Cone and Cannabis Rex speakers. That's probably as close as anyone has ever gotten to an all-hemp rig. "With climate change, and all of this, I don't think our species is going to be around much longer," he said. "I think that we need to make a change."



New & Cool

SWEET SKINS

The Emperor may wear no clothes, but you do. The ladies at Sweet Skins hand-make their hemp-blended clothing lines in Eugene, Oregon. Their product lineup is fairly extensive, ranging from outerwear to underwear and everywhere in between. They even offer baby clothes and a range of hemp and non-hemp accessories. See more at SweetSkins.com

ROLKAZ COLLECTIVE SKATEBOARDS

If rock 'n' roll is going to save the world, they'll need some help from the skaters. Slovenia-based Rolkaz Collective makes hemp composite resin-pressed skate decks and wheels. Decks cost around \$100, and wheel sets are in the \$40 range, available via their Website, Rolkaz.co.



YOUR HEMP PROCESSING PARTNERS!

Toll & contract hemp processing • Wholesale CBD & hemp concentrates
Private label services • Monthly material & processing contracts

541-879-3300 | sales@focushempco.com | Eagle Point, OR
[@Focushempco](#) [@FocusHempExtraction](#)



Quality • Consistency • Professionalism



dabTABS™

INFUSED WITH

LUVLI



OWNED, GROWN AND OPERATED BY OREGON GROWERS

THIS IS A MARIJUANA PRODUCT. DO NOT OPERATE A VEHICLE OR MACHINERY UNDER THE INFLUENCE OF THIS DRUG.
FOR USE BY ADULTS TWENTY-ONE YEARS OF AGE AND OLDER. KEEP OUT OF THE REACH OF CHILDREN. PATENTS PENDING.

NAVIGATING THE



I THINK WE'RE GETTING OVER THE MOONSHINE DAYS OF CANNABIS, WHERE PEOPLE CAN ACTUALLY ENJOY THE ENTIRE JOINT AND NOT JUST TAKE ONE OR TWO HITS AND GET REALLY HIGH. AND I THINK THE ANSWER TO THAT IS HEMP CBD FLOWER."

CBD PIZZA. CBD LUBE. CBD SOCKS. THE WORLD IS SUDDENLY OBSESSED WITH THE BEGINNING OF THE ALPHABET.

TO MANY PEOPLE, NAVIGATING THE SKYROCKETING CBD MARKET AND ITS WIDENING ARRAY OF PRODUCTS FEELS LIKE A DAUNTING, CONFUSING TASK.

IT HELPS TO HAVE A SHERPA. SO WE TALKED TO A COUPLE OF KNOWLEDGE-ABLE GUIDES TO HELP CUT DOWN ON THE NOISE AND PROVIDE A CLEAR PATH TO RELIEF.

THC'S KIND COUSIN

Dr. Adie Rae (Wilson-Poe) has built a name for herself as a preeminent researcher on the uses and effects of Cannabis compounds at her research facility, Habu Health, and her research company, Smart Cannabis - which she runs alongside Jeremy Sackett of Cascadia Labs, as well as Prof Cultivar's Jeremy Plumb and Steph Barnhart, the brains and muscle behind the Cultivation Classic.

She believes that the Cannabis plant will work wonders, especially as consumers find new ways to experience the full benefits of the plant, aside from THC heavy recreational usage. "The wonderful thing about CBD is that it's not

going to hurt anyone. Even at really high doses," Rae said. "I think we're getting over the moonshine days of Cannabis, where people can actually enjoy the entire joint and not just take one or two hits and get really high. And I think the answer to that is hemp CBD flower."

Rae believes that the future of the Cannabis-based wellness industry involves a healthy respect for THC and its power to supplement the beneficial effects of the other molecules in the plant. She, like many other researchers, warns against isolated, high dose consumption of THC, and instead believes that people would benefit more from shifting the ratio to CBD - THC's rational, wellness-focused cousin.

"Let me draw an analogy," she said. "Smoking 25% to 30% THC flower is like having a shot of whiskey. Smoking an entire hemp pre-roll is like having a light beer. Until now, we've only had shots of whiskey."

CLEANLINESS IS NEXT TO WELLNESS

Trust is hard to come by in the new market, with so many new companies claiming to have the next wonder product. One of the biggest concerns for consumers is

the cleanliness of their product. As of right now, the FDA and USDA are not governing what people can put in their products.

"We don't have that level of oversight yet, and that's a complete disservice to consumers," Rae said. "That's their job, consumer safety."

One way to side-step this issue is to seek out foundational brands that have already gone through years of trials and building trust in the market. It helps to have a knowledgeable herbalist to dole out advice.

"As a shop owner, I really try to vet the companies I carry and understand their processes," says Ashley Dellinger, owner of Lumi Wellness Shop in Portland. "Where are they getting their oils from? People like East Fork and Sun God Medicinals, I know that I don't have to hand-hold them. They're always going to do the right thing."

But say a consumer doesn't have access to someone like Dellinger who has vetted the products - what do they do then? Rae says due diligence and informed consumption are the only way to go.

"We know that CBD is safe as long as it's not contaminated with something like pesticides," Rae said.

But how do people know that a product is pesticide-free? Or that it even has CBD in it to begin with?

"The only way to know that a label is accurate, is if a third-party laboratory has tested the product," Rae said.

Third-party laboratory testing is an expensive but necessary piece of the puzzle. Because of high testing costs, it will be obvious whether a company gets its products tested - it will be proudly displayed on the packaging and the company's Web site.

Testing will show whether the product has been contaminated by pesticides, and will also include information on the entire range of cannabinoids (THC, CBD, CBN, CBG) and terpenoids in the product.

"That's not just to make sure you're not buying snake oil, and that you're actually buying CBD," Rae said. "The best companies are going to be extremely proud of their phytochemical makeup." Dellinger says that if people buy exclusively from companies that third-party test their products, that

MARKET

will go a long way to weed out any bad actors, and force the industry to self-regulate. In her time as a hemp broker, she has seen the need for this firsthand.

"I've been out to hemp farms that are like, 'Oh, we're organic, we're pesticide free,'" she said, "But then you look over at the winery right next to them, and you see the overspray where it has hit their hemp crop, and they're not taking that and throwing it away."

Rae brings it back to the moonshine analogy, and the slow shift from an unregulated market to a regulated one.

"If it hasn't been tested, it's like buying moonshine out of the back of a truck on the side of the road," she said. "To make sure you get the best product for your money, make sure you do the homework ahead of time."

"If you're going to the coffee shop and they offer to put CBD in your coffee for an extra three dollars, that's probably not the best time to buy CBD. Unless it's from East Fork."

COMPOUND COCKTAIL

Manufacturers use a variety of methods to create CBD products. Some attempt to isolate the CBD molecule in distillate oil or isolate powder, which is then mixed into delivery methods in order to create a CBD-only effect.

Others use the broad spectrum approach, extracting nearly the entire molecular profile of the plant. These products will usually denote that they are broad spectrum, or sometimes full spectrum.

In order to make sure that you get the most out of your CBD, Rae recommends going with broad spectrum products, which include the full suite of complementary molecules and compounds.

She calls it the "multi-vitamin approach."

"We know that CBD is enhanced by other cannabinoids, terpenoids, flavonoids," she said. "That's the best way to support your endocannabinoid system. If I was at New Seasons, and one of my close friends was with me, and she

or he asked me for a recommendation on a CBD product, I would recommend broad spectrum," she said. "Even if it was \$30 more, I would recommend it."

Many companies offer both broad spectrum and isolated CBD products, in order to serve multiple demographics. Broad spectrum products may have trace amounts of THC, though they'd be so far below the threshold that they would have no impact on the consumer, other than supporting the efficacy of the CBD. But not everyone can go that route.

"If your job is on the line, and you can't afford to have any THC in your blood whatsoever, then a purified CBD product may be best for you," Rae said. "But then you'll be missing out on health benefits."

FINDING THE RIGHT ROUTE

So you want to see if CBD will work for you, but you're not sure where to start. Hold off on the CBD socks for a minute. Dellinger says she likes to help her customers find the best route by finding out what they hope to accomplish with CBD.

"If you're in really bad pain, you don't want to microdose on an edible that's packed with a lot of sugar, that's going to increase inflammation," Dellinger said.

She believes that inhaling is currently the way to get the most benefit out of your CBD, and suggests pre-rolls and vaporizers for the quickest uptake and the most significant benefit.

Rae feels the same way, and goes as far as to warn people off of edibles if they're looking for maximum effect. "When you eat CBD, it has to go through your digestive system, and it's your liver's job to process and distribute this to your bloodstream," Rae said. "And your liver is really bad at this." The difference between delivery methods can vary significantly. "Edibles can take 30 to 90 minutes to take effect, and only offer 5% bioavailability," Rae said. "Tinctures ingested sublingually (held under the tongue for 3 minutes) offer significantly more impact."

Like Dellinger, Rae believes that the most effective delivery method currently on the market is inhalation, but she doesn't recommend combustion - as

it destroys the terpenoids and you lose out on a significant part of the experience.

The best way, she says, is to find a tested, reliable source of whole smokable hemp flower and to use a flower vaporizer. If you must use vape cartridges, she says to make sure the oil is tested, that the cartridges have a ceramic coil, and that the battery has a variable voltage set on the lowest setting.

For those with muscle and joint pain, this can be supplemented with topicals. Rae says to look for topicals blended with compounds that offer increased bioavailability, such as jojoba oil, rosemary or other cosmetic essential oils.

Regardless of whether you're consuming isolated CBD, broad spectrum with a little THC, or any number of the recreational and medicinal products on the market, Rae wants to make sure people are practicing careful consumption, and consulting a doctor if they're also taking prescription medications.

"People have varying levels of tolerability, particularly for THC," she said. "Pay attention to how you respond to any product you're consuming, and consume it mindfully."

"Just because your spouse takes two drop-perfuls, doesn't mean that is going to work for you. Pay attention to how you feel. Keep a record of what you took."

SO YOU WANT TO SEE IF CBD
WILL WORK FOR YOU, BUT
YOU'RE NOT SURE WHERE
TO START. HOLD OFF ON THE
CBD SOCKS FOR A MINUTE.



BULK HEMP SEEDS

HEMP FARMING CONSULTING

HEMP BIOMASS

CBD & NANO CBD

ISOLATE

DISTILLATE

WHITE LABEL CBD PRODUCTS

welcome
to the boom !



We are standing on the brink of a worldwide green rush, ready to show the world how it's done. At GreenFarms Co, we've recruited the brightest and boldest minds in the hemp business. From medical farmers and scientists to business leaders, we grow, harvest and extract within a vertically integrated closed loop. So from seed to soil to shelf to seed again, we own every step of our process. It's happening in Colorado, Michigan, Oklahoma *and soon, so many other states.*

Join us. Let's grow together.

Call 912.399.4188 or email info@GreenFarms.co.

GreenFarms 



THE MOST UNIQUE AND
PRODUCTIVE BUSINESS-TO-BUSINESS
TRADE SHOWS IN THE
DISPENSARY SHOP INDUSTRY.

COMING SOON

PORTLAND, OREGON

GET PAST THE GATEKEEPERS | MAINTAIN THE RIGHT RELATIONSHIPS
EFFECTIVELY INTRODUCE YOUR INNOVATION FOR FASTER ROLL-OUTS

Our conferences are invitation-only, pre-scheduled, one-on-one meetings
that take place in private suites, not busy, overcrowded trade show floors.

SPONSORED BY



For more information, please contact us at
info@ssegroupllc.com or 877-220-9502.



An SSE Group LLC Production

HALLOWEEN



SPOOK UP YOUR OCTOBER!

DEM CANNA-BONES

The pirate head and the crossbones are lying on a bed of crumbled brownies. The white chocolate and salty pretzels are a fantastic flavor pairing, and everyone gets four.

Makes 24 bones, six servings

24 pretzel sticks
48 mini marshmallows
10 ounces vanilla melts or chips
2 tablespoons canna-butter
½ teaspoon vanilla extract

1. Place pretzels and marshmallows on your work surface. Stick a marshmallow on the ends of each pretzel.

2. Place the melts in a microwave safe bowl along with the canna-butter. Heat the melts on 50% power in thirty-second intervals. The melts may not appear melted, but they may be. Stir to check. Continue melting at twenty-second intervals until fully melted.

3. Using a fork or tweezers fully immerse the pretzels in the melted chocolate. Tap off excess chocolate and place the “bones” on parchment to set. With any remaining chocolate, pour onto parchment, using a cookie cutter or free hand to cut out a pirate shape. And give that face some eyes. It’s only fair.

CANNABIS CORN BALLS

Makes eight, four inch balls

You can make your own popcorn or buy already popped. No cheddar popcorn this time. Making this recipe with caramel corn and a hit of sea salt will be a mind blower, in the best way possible.

2 tablespoons coconut oil or butter
2 tablespoons canna-oil or butter
1½ cups candy corn
1 10 oz. bag marshmallows
6 cups popped popcorn

1. In a large skillet melt the oils or butters. Add a half cup of the candy corn and melt with the marshmallow. When that candy corn is melted, add the next half along with the cereal. Stir well and remove from the heat.

2. Stir remaining candy corn into the cooling treats. The mixture will be hot, so wait until it cools a bit. With damp hands, form the mixture into balls about the size of lemons. Allow to set for at least an hour.

GROWN-UPS DESERVE TO CELEBRATE HALLOWEEN.

In fact, I think it helps us stay young. You can be anyone you want to be. And you can be pretty darn high, as long as there is no driving or operating of heavy machinery. Keeping things mellow, we used the 1:1 strain Bliss Berry from our friends at East Fork Cultivars. This candy reminiscent strain smells sweet, with aromas of berries and the tropics.

MICRO-MUG CAKE

If you haven't tried making a mug cake you should get on this. It's the perfect way to take care of and infuse the oh-so special you.

Serves 1

1 tablespoon plus two teaspoons butter
1 teaspoon canna-butter
2 tablespoons milk
1 teaspoon vanilla
1 egg yolk
2 tablespoons white sugar
¼ cup all purpose flour
½ teaspoon baking powder
2 tablespoons sprinkles, any size or color
Pinch salt
Optional sprinkles for garnish

1. In an 8 or 10 oz. microwave safe mug or ramekin, melt the butters. Allow to cool for one minute. Stir in the milk, vanilla and egg yolk, mixing well.

2. Add the dry ingredients, including the two tablespoons of sprinkles, until just mixed.

3. Microwave on high for 60 seconds. Check for doneness. You may need an extra 20 seconds if the cake appears unset in the center. That said, the cake should appear moist when done.

4. Sprinkle with remaining sprinkles if desired.



As soon as
I pulled the
bottle out, I could
smell the organic
peppermint oil
leaping out
of the top.

PRODUCED *by*
SACRED FLOWER FARMS

HEMP FLOWER CBD BLEND TINCTURE

This hemp flower CBD tincture from the folks at Sacred Flower Farms has about 2600 mg of CBD blended with a plethora of organic essential oils.

The tincture came packaged in a 30 ml dropper inside of a tiny cardboard box.

The outside of the box has useful information regarding the essential oils blended into the tincture, and how they benefit the mind and body as a whole.

As soon as I pulled the bottle out, I could smell the organic peppermint oil leaping out of the top.

Each drop contains about 4.3 mg of CBD. I followed the recommended dose guideline, which is 3-5 drops, three times a day. I have a pretty high tolerance for THC, so I was honestly not expecting to feel much.

However, about four hours into my day I felt more energetic and focused. The dropper makes it easy to pinpoint the desired dose, and they recommend to put it right under your tongue.

This could be a great option for patients and consumers experiencing chronic pain, anxiety and depression, as it provides relief without the psychoactive effects.

SacredFlowerFarms.com

TASTE 4/5
EFFECT 5/5
PKGNG 5/5
VALUE 4/5
TOTAL 18/20

2600MG CBD
per bottle
4.3MG CBD
per dropper



Humboldt
Seed Organization

www.humboldtseeds.net



Need **seeds** or **seed-starts**?

ras@humboldtseeds.net

Specializing in consultation
and SOP management

SOVEREIGN

FIELD S



CONNOISSEUR PRE-ROLLS AND CBD PRODUCTS | [THESOVEREIGNSTORE.COM](https://thesovereignstore.com)

PHOTO: "BUBBA" KUSH HEMP E1

HEMP SHATTER

EXTRACTED *by*
WILDFLOWER HEMP CO.

THIS CBD RICH SHATTER CAME PACKAGED IN UNBLEACHED PARCHMENT PAPER INSIDE A SIMPLE MYLAR ENVELOPE.

The package is labeled as shatter, however, the consistency is more of a pull and snap.

I broke off a few pieces for a sizeable dab, and was impressed with the flavor.

Mostly earthy funk, backed by cherry cough syrup on the exhale. The medicinal cherry flavor could be off-putting to some, but I found it to be enjoyable in this extract.

Immediately after the first dab, I felt the calming effects wash over me as my anxiety began to dissipate.

The non-psychoactive effects (65.5% CBD) allowed me to remain at a high level of functionality throughout the day. I would recommend this extract to patients and consumers looking to relieve anxiety and chronic pain, as the effects are strong and long lasting.

WildflowerHempCo.com @WildflowerHempCo

IMMEDIATELY AFTER THE FIRST DAB, I FELT THE CALMING EFFECTS WASH OVER ME AS MY ANXIETY BEGAN TO DISSIPATE.

TASTE 3/5
EFFECT 5/5
PKGNG 4/5
VALUE 4/5
TOTAL 16/20



VALUE

QUALITY

CONSISTENCY

**CURED RESIN
& LIVE RESIN
CARTRIDGES**



WHITELABELEXTRACTS.NET   

WARNING! FOR USE ONLY BY ADULTS 21 AND OLDER. KEEP OUT OF THE REACH OF CHILDREN. DO NOT DRIVE A MOTOR VEHICLE WHILE UNDER THE INFLUENCE OF MARIJUANA. THIS PRODUCT IS NOT APPROVED BY THE FDA TO TREAT, CURE OR PREVENT ANY DISEASE.



FUSION CBD

Hemp & Salve Ointment

AS A WRITER, I EXPERIENCE PAIN IN MY HANDS, WRISTS AND NECK FROM COUNTLESS NIGHTS SLUMPED OVER MY LAPTOP TRYING TO BEAT MY DEADLINES, AND THIS SALVE IS RIGHT ON MY DESK WHEN MY HANDS NEED SOME EXTRA TLC.

Fusion CBD is a hemp-derived CBD product with a whopping 300 mg of CBD. The coconut and beeswax base absorbs beautifully into the skin, invigorating you with the aroma of fresh lemongrass.

LOOKS

Fusion CBD salve comes in a clean glass container. The salve itself is white without any color or additives.

AROMA

The smell is incredible. Strong overtones of lemongrass enliven the senses, featuring sweet and fragrant notes of lavender with just a hint of eucalyptus. Bravo to the creators for the balance of aromatics without overwhelming the senses.

CONSISTENCY & ABSORPTION

My only sticking point is that this product is a hard salve, meaning it takes a little friction and warmth to loosen the product up and apply to the skin. But once you get the product on, it absorbs quickly, leaving your skin silky-soft and with abundant moisture. It feels greasy at first - probably because of the coconut oil - but it doesn't linger and absorbs into the skin evenly.

OVERALL

This is one of the first hemp-derived CBD salves I have used, and I am a major fan. Other than the hard consistency, it is a great product for those looking for CBD without large amounts of THC. As a writer, I experience pain in my hands, wrists and neck from countless nights slumped over my laptop trying to beat my deadlines, and this salve is right on my desk when my hands need some extra TLC. It's a lifesaver and again, I can't get over the smell. Kudos!

FUSIONCBD.COM
@FUSIONCBD
 4oz jar, 300mg CBD

Experience

The best selling topicals in Oregon*

*ACCORDING TO BDS ANALYTICS



Only
THE BEST STUFF

All-natural ingredients. No parabens, phthalates, sulfates or glutens. Always cruelty-free.
View our full line of lotions, balms, and bath products at www.HighDesertPure.com

Connect

@HighDesertPure | @HDPCBD
orleaf@highdesertpure.com



Shop

Ask your neighborhood dispensary
for High Desert Pure Products



Keep out of reach of children. This product is not intended to diagnose, treat, cure, or prevent any disease.
Do not operate a vehicle or machinery under the influence of this drug.
For use only by adults twenty-one years of age and older.



TANNINS**ILLAHE 2018
VIOGNIER***\$16.99 at New Seasons Market**IllahéVineyards.com*

BRAD AND BETHANY FORD live a charmed life at their pastoral winery outside of the Dalles, Oregon, where they spend their time crafting traditional expressions of predominantly French varietal wines.

In fact, they're so Old World that they're known to employ archaic, distinctly unmodern equipment, particularly for their 1899 Pinot Noir, which involves no electricity in its production, and is transported only by stagecoach, bicycle, and canoe.

Their 2018 Viognier (pronounced VEE-ohn-YAY) may not be made with such an obsessive commitment to age-old methodology, but it stands as a perfect representation of the grape - with stonefruit, citrus and slight floral notes on the nose, and a softly honeyed peach character straddling a tart, acidic zing on the palate.

This is the perfect wine to enjoy during those weeks in October when the temperatures rise and the sun peeks out for one last encore performance before winter draws its curtain.

TERPENES**RETREATS
BY WILLAMETTE
VALLEY ALCHEMY***\$24, WillametteValleyAlchemy.com*

ONE OF THE BEST THINGS about Willamette Valley Alchemy's Retreats line of medicated gummies is the array of well-realized flavors that come in one package. The line's creator, Lynn Earnest, uses fruit puree to craft each expression, and includes two each of five flavors in every strain-specific, farm-branded package.

We chose the indica sampler, which uses whole plant extract of Granddaddy Purple from the stellar outdoor cultivator Benson Elvis.

Each flavor in the pack - Strawberry Blast, Sunrise Grapefruit, Lala Lychee, Passionfruit Punch, and Blueberry Bliss - is distinct and delicious, with only a hint of herbaceous character showing through the sweet and slightly tart fruitiness.

The zippy Grapefruit was this reviewer's favorite. The single-strain indica offered mellowing relaxation without diminishing mental acuity.

These would be a casual, light accompaniment to the stonefruit subtleties of the Illahe Viognier, and make for a mellow night in. The Retreats are also available in sativa, 1:1, and CBD varieties.

Oregon Leaf Disclaimer Anytime you are mixing two substances of any kind, you need to be extra vigilant of the effects and plan accordingly. We strongly recommend conducting pairings with others in a safe and private space in small quantities. Always make sure you can get home safely without jeopardizing yourself or others.



**ONE OF THE BEST THINGS ABOUT
WILLAMETTE VALLEY ALCHEMY'S
RETREATS LINE OF MEDICATED
GUMMIES IS THE ARRAY OF
WELL-REALIZED FLAVORS THAT
COME IN ONE PACKAGE.**

HEMP.PRESS®

The First And Only Hemp Paper Print Shop

Established in 2013, Hemp Press is the local print shop making a global impact. We believe that **The Future of Paper is Rooted in Fields, Not Forests.™**

HEMP PRODUCTS BELONG IN HEMP BOXES

CUSTOM PACKAGING FOR YOUR OIL DROPS, TOPICALS, CAPSULES, CARTRIDGES, JOINTS, ETC

sales@printedonhemp.com • 541-357-7513

500 FREE HEMP BUSINESS CARDS

with your First Custom Packaging Order when you mention Oregon Leaf. (\$180 Value)



Conscious Intent

@SACRED.FLOWER.FARMS

/SACREDFLOWERFARMS

@DEMSACREDFLOWER



We read it all



So you don't have to



- Lobbying
- Advocacy
- Regulatory Help
- Policy Updates
- Wholesale Reports
- Monthly Meetings
- Access to Banking

Make Your Voice Heard!

Become a member today

Oregoncannabisretailers.com - 971-266-4109



TRUTH

D I S P E N S A R Y

NOW DELIVERING

[TRUTHDISPENSARY.COM/DELIVERY](https://truthdispensary.com/delivery)

POWERED BY DUTCHIE

“EXPERIENCE THE TRUTH”

(503) 967-6010

1735 LANCASTER DR NE, SALEM, OR

THE ONLY DISPENSARY ON LANCASTER

RAD EXPOTM Retail & Dispensary Expo

The only national trade show focused on the retail side of the cannabis industry

FREE

for qualified
retail stores

*with early registration

October 23-24, 2019
Oregon Convention Center
Portland, OR

ATTENTION

Cannabis Retailers

- 300 exhibitors with a wide variety of goods and services
- Speaker with experience in inventory turns, merchandising, store flow, and customer retention programs
- Hundreds of Hemp and CBD products
- The latest in merchandising & display cases
- Designers and architects of award-winning retail environments
- National marijuana brands



For more information and to register

www.theradexpo.com or call: **425-656-3621**

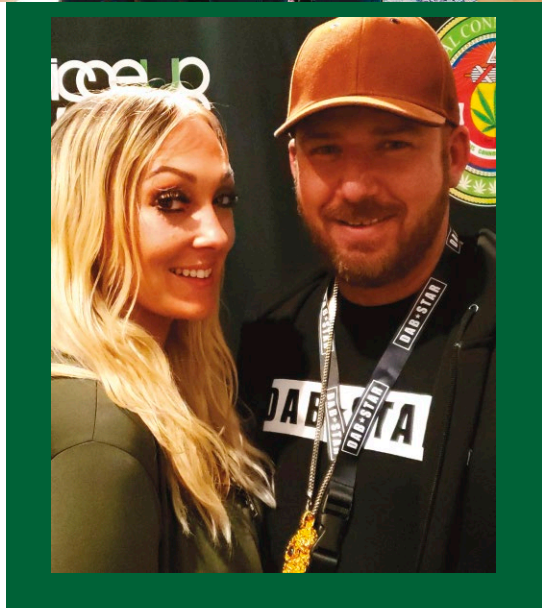
Produced by Marijuana Venture, the leading business magazine for the legal cannabis industry



**MARIJUANA
VENTURE**
www.marijuanaventure.com



DENVER



Jessica stopped suddenly as we hustled through the Denver International Airport, the look of terror in her eyes told me it was something big. "The camera bag!" she finally exclaimed.

I let out a groan. We were in Denver

to link up with some friends throwing a local event while

snagging coverage of the drought that was gripping

Colorado's legal market. The previous year's crop had failed

to meet demand and shops were left scrambling to keep

the shelves full. By now our camera, which had been left at

the security line along with our car keys, was

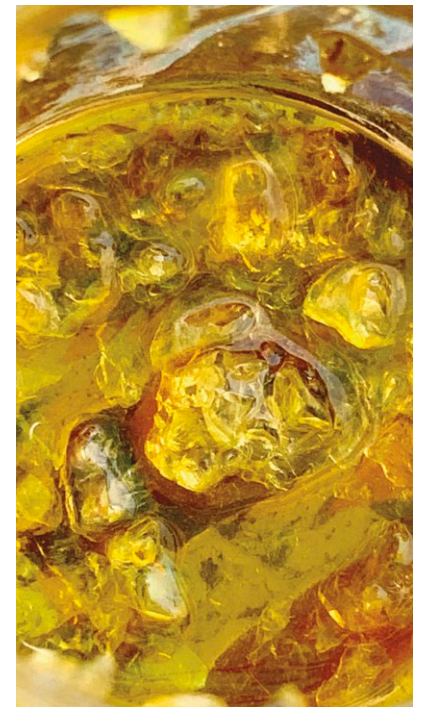
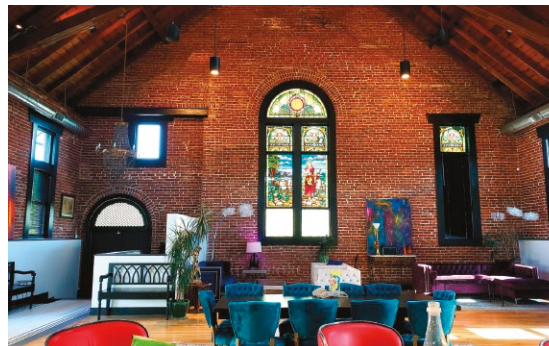
somewhere in the SeaTac lost and found...

If we were lucky.





Jonah Tacoma is the man behind Dabstars, an international Cannabis promotion company with roots way back in the medical world. This monthly column documents Tacoma's travels and adventures around the globe, spreading the message of Cannabis activism. Learn more and follow along at Dabstars.com



77

THE CONNOISSEUR CUP WAS SET TO BEGIN LATER THAT DAY IN A 6,000 SQUARE FOOT CHURCH, RECENTLY RENOVATED INTO A MANSION STYLE B&B. THERE WAS SOMETHING ALLURING ABOUT THROWING DOWN IN THE HOUSE OF THE LORD AND WE WERE BOTH EXCITED FOR THE DAY'S FESTIVITIES, IN SPITE OF THE SETBACK.

A 30 minute Uber ride across town landed us at Ian Scarfini's apartment. I had met Ian half a decade ago, a young homeless skater on the streets of Denver who suffered from debilitating seizures. In spite of his circumstances, Ian's personality and die hard optimism instantly set him apart from the rest and we had quickly adopted him as a member of the crew.

Ian met us in the parking lot "You made it!" He shouted, a big smile on his face. I cracked a jar of good Washington indoor bud on the way up the elevator, letting the smell fill up the tiny space. Ian's eyes bugged out of his head when he heard how little we paid for it, producing some mids that were circulating locally.

"The drought in Denver is crazy right now." He exclaimed as if in explanation.

Ian's apartment was an explosion of fabrics and colors. A Singer sewing machine was the focal point of the living room, surrounded by case after case of "Scarfinis" in various states of production.

The Scarfini was Ian's brain child, a hand sewn stylized bandana with a small stash pocket hidden inside. He had used the idea to lift himself up off the streets, sewing and selling hundreds upon hundreds of his tiny creations.

We passed the day dabbing and exchanging war stories before heading out as a trio for the cup. The taxi dropped us off in front of a giant Spanish style Catholic church and I looked up quizzically at the monolithic stained glass windows, as Jayson Vezzoso, the promoter, yelled a hello from down the street.

The man behind Denver's Bongathon and the Connoisseur Cup, Jayson was a longtime industry friend and our host for the weekend. "What's up my brother!" I shouted, greeting him with a hug.

We fell in line behind his tiny procession, filling our arms with food and other preparations being brought in for the event.

The procession stopped abruptly at the front

I CRACKED A JAR OF GOOD WASHINGTON INDOOR BUD ON THE WAY UP THE ELEVATOR, LETTING THE SMELL FILL UP THE TINY SPACE. IAN'S EYES BUGGED OUT OF HIS HEAD WHEN HE HEARD HOW LITTLE WE PAID FOR IT. PRODUCING SOME MIDS THAT WERE CIRCULATING LOCALLY.

door as Jayson fumbled with the door code. Several attempts later he was on the phone with the landlord.

"I have good news and bad news," he explained as he returned. Jayson turned to me. "The good news is this is your B&B for the night."

I looked at Jessica who was grinning ear to ear.

"The bad news is we can't do the event here, but he has another property down the street that we can use."

The landlord had gotten wind of the size of the event and had decided his newly renovated church mansion was out of the question. In spite of the hitch, the party went on without one.

It was a celebration of Denver's burgeoning weed scene and we smoked and dabbled long into the night. Cannabis was a homegrown revolution, one that had forever changed the midwest for the better.

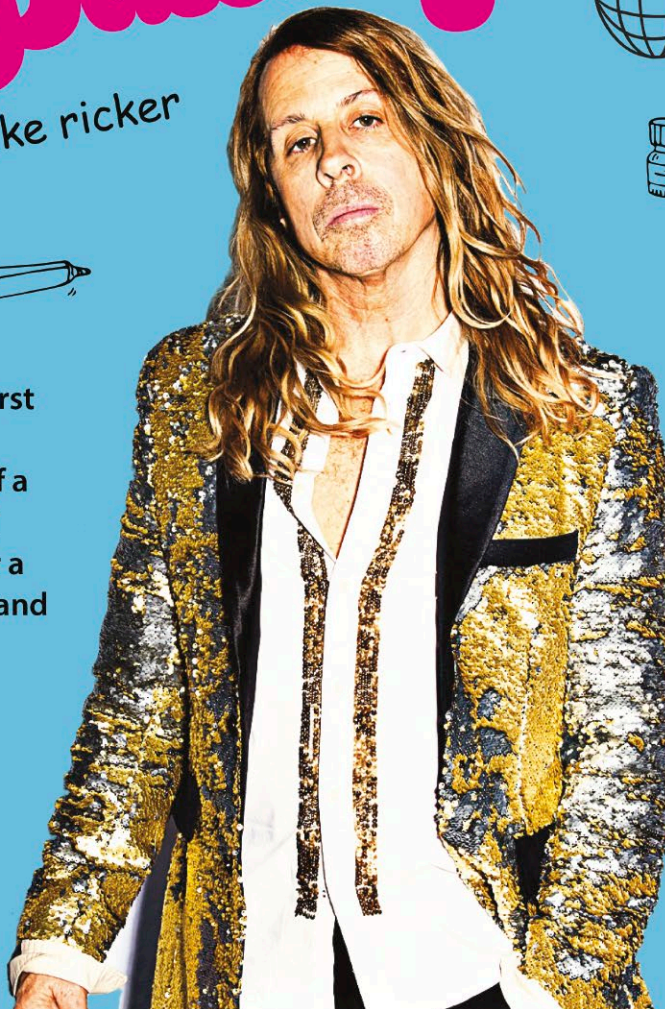
As the party began to wind down we said our goodbyes and I pulled Jessica into a waiting cab. "There's something I always wanted to do in a church," I said grinning...

Stoney Baloney

by: mike ricker

Stoney Baloney is the world's first narrated Cannabis Column cultivated from the clippings of a former radio shock jock turned cannalosopher. Hop aboard for a joyride of dabbed distinctions and psychedelic perspectives.

STONEY-BALONEY.COM



The Roaring 20's

Cannabis got cheated. About a hundred years ago, prohibition was passed "to cure the ill society" by eliminating liquid courage and other sinful excesses, making the 1920s the decade where wetting the whistle got replaced by the crossword puzzle and Charlie Chaplin.

Being an alcoholic must have sucked.

Being a stoner would have been worse. Because, although they couldn't make liquor go away, they sure put the kibosh to marihuana by labeling it as a poison.

What a bunch of assholes.

But you know what they also couldn't make go away? The weirdos who loved the madness of reefer. Maybe they loved ragtime and jazz music and Kerouac along the way, and trippy tapestries and Hendrix and Cheech and Chong and Half Baked and Harold and Kumar and Tame Impala. Maybe they loved a lot of things about the way it makes us feel healthy and happy. We love it.

And love is a powerful phenomenon. You can't kill love. Because it will survive (just as the cockroach survives) and evolve into something indistinguishable. After all, it is a weed. And if there is sun and water...it will grow.

The freaks flags are flapping in the wind and inmates are the new CEOs of the asylum.

This is the beginning of the globally recognized, legally empowered culture of Cannabis where anything goes as long as you've got an open heart. Everyone's welcome.

Be prepared to be blown away. It'll mend your untethered sail.

Cheaters don't win in the long run. Sometimes a hundred years.

2020 is the year of vision. We're gonna dance the Charleston.

THE PLANT



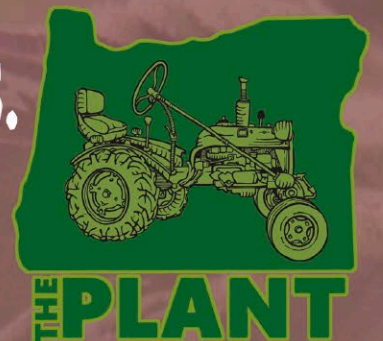
See the flowers through the trees.

 **THEOGPLANT**
WWW.THEPLANT.FARM



HARVEST 2019

Only for use by adults 21+. Do not operate machinery or drive under the influence of Marijuana. Keep out of reach of children.





Rebel Roots Farms

Cannabis Terps
Extracted In-House
No Additives
No Botanicals
Since We Started
est. 2016

